

Beneath the Seamark: 6,000 years of an Island's History

Archaeological Investigations
at 'Thanet Earth', Kent 2007–2012

Russell Henshaw, James Holman, Robert Masefield, Jon
Rady and Jake Weekes



Canterbury Archaeological Trust Technical Report 2
Volume 6: Plates



CANTERBURY
ARCHAEOLOGICAL
TRUST LTD

92a Broad Street · Canterbury · Kent · CT1 2LU
t: 01227 462062 e: admin@canterburytrust.co.uk
canterburytrust.co.uk

*Beneath the Seamark: 6,000 years of
an Island's History. Archaeological
Investigations at 'Thanet Earth',
Kent 2007-2012*

Russell Henshaw, James Holman, Robert
Masefield, Jon Rady and Jake Weeke

With contributions by Enid Allison, Luke Barber, Lynne Bevan,
Chris Butler, John Carrott, Wendy J. Carruthers,
Peter Couldrey, John Crowther, Iain Ferris, Alison Foster,
Sarah Gearey, Brian Gilmour, Louise Harrison,
John Hunter, Rob Ixer, Mandy Jay, Susan Jones,
Alison Locker, Malcolm Lyne, Richard Macphail, Barbara
McNee, Janet Montgomery, Olaf Nehlich,
Maura Pellegrini, Beccy Scott, Peter Searey and Sheila
Sweetinburgh

Volume 6: Plates

Canterbury Archaeological Trust Technical Report 2
Canterbury 2019

List of Plates

- Plate 1 Aerial view of site looking south
- Plate 2 Aerial view of site looking south-east
- Plate 3 Topsoil strip of Plateaus 2 and 4 looking east
- Plate 4 Topsoil strip of Plateaus 2 and 4 looking south-east
- Plate 5 Topsoil strip - Plateau 4
- Plate 6 Topsoil strip - Plateau 4
- Plate 7 Aerial view of site looking west, some time into the excavation program (Jan 2008)
- Plate 8 Preliminary metal detecting
- Plate 9 Topsoil stripping
- Plate 10 Topsoil stripping
- Plate 11 Surveying with GPS
- Plate 12 Forming the level plateaus after archaeological investigation
- Plate 13 Excavating the pipeline trench just north of Monkton Road Farm
- Plate 14 Downland landscape traversed by the pipeline trench. North of Little Brooksend, looking south towards Thanet Earth
- Plate 15 The plateau south of Birchington traversed by the pipeline trench. Looking north-east towards Birchington
- Plate 16 Photographing the Plateau 7 barrows with a boom lift or 'cherry picker'
- Plate 17 The 2012 Plateau 1 extension area under excavation looking west
- Plate 18 Early Neolithic pit S10454 , looking north Scale 0.5m
- Plate 19 Early Neolithic pit S12304 , looking east Scale 0.5m
- Plate 20 Early Neolithic pit S3941 , looking south; Scale 0.5m

- Plate 21 Barrow 1 before excavation looking north-west, scale 2m
- Plate 22 Barrow 1 before excavation looking south, scale 2m
- Plate 23 Barrow 1 during excavation looking south
- Plate 24 Barrow 1 excavated looking south, scales 2m
- Plate 25 Barrow 1 from the air, south to top
- Plate 26 Barrow 1. Section of inner ring ditch G6005
- Plate 27 Barrow 1. Section of inner ring ditch G6005 v2
- Plate 28 Barrow 1. Section of outer ring ditch G6006
- Plate 29 Barrow 1. Section of outer ring ditch G6006 v2
- Plate 30 Barrow 1. The inner and outer ditches
- Plate 31 Barrow 1. Burial G6004; excavated looking south-east, scale 0.2m
- Plate 32 Barrow 1. Burial G6004; Skeleton S6.1 being excavated looking south, scale 0.2m
- Plate 33 Barrow 1. Burial G6004; detail of crushed beaker (FN 6.9000)
- Plate 34 Barrow 1. Burial G6004; Skeleton S6.1 disposition of grave goods, scale 0.2m
- Plate 35 Barrow 1. Burial G6004; the grave goods, scale 0.2m
- Plate 36 Barrow 2 under excavation, looking south
- Plate 37 Barrow 2. Section (showing medieval hollow way to right/left); looking north-east; scale 2m
- Plate 38 Barrow 2 under excavation, looking south
- Plate 39 Barrows 2 and 3 from the air; north to top
- Plate 40 Barrow 2. Section showing carbon rich layer G7004; scale 1m
- Plate 41 Burials S7143 and S7151 within the Barrow 2 ring-ditch. Looking north-east, scale 0.2m
- Plate 42 Burial S7143 within the Barrow 2 ring-ditch. Detail of skeleton looking south-east, scale 0.1m

- Plate 43 Burial S7573 within the Barrow 2 ring-ditch. Looking north-east, scale 0.2m
- Plate 44 Burial S7157 within the Barrow 2 ring-ditch. Detail of skeleton looking north-east, scale 0.5m
- Plate 45 Barrow 3 before excavation, looking south-east
- Plate 46 Barrow 3, selected section, scale 1m. Shows disturbed levels at base of ditch and dark 'midden fill' (G7010)
- Plate 47 Barrow 3 excavated with Barrow 2 in background, looking south-east; scales 2m
- Plate 48 Barrow 4 excavated, looking north-west; scales 2m
- Plate 49 Barrow 4 excavated, from the air; south-west to top. Post-medieval windmill and Seamark foundations visible to lower right [Chapter 8]
- Plate 50 Barrow 4; central grave G6007, looking north; scales 0.5m and 1m
- Plate 51 Barrow 5 excavated, looking east. Scales 1m
- Plate 52 Barrow 5. Grave S3264, looking north-west; scale 0.5m
- Plate 53 Barrow 5. Grave S3267, looking north-west; scale 0.5m
- Plate 54 Barrow 6 under excavation looking west
- Plate 55 Excavation of features (Roman cremation burials) in vicinity of Barrow 6, looking south-west
- Plate 56 Enclosure 3 looking north-west
- Plate 57 Enclosure 3 - ditch section; terminal
- Plate 58 Beaker burial G2000, looking north-west; scale 0.5m
- Plate 59 Beaker burial G3004, looking south-west; scale 0.2m
- Plate 60 Beaker burial G4043, looking south-west; scale 1m. Detail of beaker inset
- Plate 61 Beaker burial G10003, looking north-west; scale 0.2m
- Plate 62 Beaker burial S10824, looking north-east; scale 0.2m
- Plate 63 Beaker burial S10843, looking SW; scale 0.2m

- Plate 64 Beaker burial S10843, looking SE; scale 0.2m
- Plate 65 Beaker burial S10843, detail of beaker pot (10845); scale 0.1m
- Plate 66 Beaker burial S10838, looking north-east; scale 0.2m
- Plate 67 Beaker burial S10838, looking north-east; detail of skeleton; scale 0.2m
- Plate 68 Excavation of the 'Pond Barrow' G2003, looking north
- Plate 69 Excavation of the 'Pond Barrow' G2003, looking west (after removal of metalling)
- Plate 70 Pond Barrow' G2003, Feature S2475
- Plate 71 Pond Barrow' G2003, Feature S2475
- Plate 72 Pond Barrow' G2003, The Palstave as found
- Plate 73 Pond Barrow' G2003, The Palstave
- Plate 74 Inhumation burials G1173; General view of the burials and ditches under excavation, looking south-east. The shallow nature of burial S1597 (foreground) in particular can be seen
- Plate 75 Inhumation burials G1173; detail of burial S1567
- Plate 76 Inhumation burials G1173; detail of burial S1597
- Plate 77 Excavation in area of Enclosure 2 (Plateau 5) looking N
- Plate 78 Enclosure 1 - mid to late Bronze Age pits S5281 and S5260 looking south-west. Scale 1m.
- Plate 79 Barrow 8. Overall view excavated, looking north, scales 2m
- Plate 80 Barrow 7. Overall view excavated, looking south
- Plate 81 Barrow 7. Aerial view, north to top
- Plate 82 Barrow 10 (Pipeline). Overall view excavated
- Plate 83 Aerial photograph showing the Plateau 8 Iron Age settlement, looking south-west
- Plate 84 Pit 8722 under excavation, looking north
- Plate 85 Pit 8722 showing sequence of fills, looking west (scale 1m)

- Plate 86 Pit 8722 showing alcove cut into in base, looking west (scale 1m)
- Plate 87 Pit 8722 post-excavation, looking north-west (scales 1m and 0.5m)
- Plate 88 Pit 8670, looking south (scale 1m)
- Plate 89 Pit 8642, looking east (scale 1m)
- Plate 90 Pit 8189, looking south-west (scale 1m)
- Plate 91 Pit 8762, looking west (scale 1m)
- Plate 92 Pit 8799, looking west (scale 1m)
- Plate 93 Pits S3596, S3602 and S3668, looking north-west (scale 1m)
- Plate 94 Pit S8733 looking east (scale 1m)
- Plate 95 Pit S3584 looking east (scale 0.5)
- Plate 96 Pit S14240 looking north (scale 1m)
- Plate 97 Pit S8308 looking south-east (scale 1m)
- Plate 98 Pit S3500 showing stakeholes in base, looking west (scale 1m)
- Plate 99 Pit S8222 and post-hole S8223, looking south-west (scales 1m and 0.2m)
- Plate 100 Consolidation deposit formed largely by burnt flint in the top of pit 8722, looking north (scale 1m)
- Plate 101 Consolidation deposit formed largely by burnt flint in the top of pit 8901, looking east (scale 1m)
- Plate 102 Loomweight in pit S3644, scale 0.2m
- Plate 103 Sub-circular enclosure 1 after excavation, looking north (scale 1m)
- Plate 104 Sub-circular enclosure 2 after excavation, looking south (scale 1m)
- Plate 105 Sub-circular enclosure 3 pre-excavation, looking north-west (scales 1m)
- Plate 106 Sub-rectangular pit S12388 in G8202 showing compacted fill of burnt flint, looking east (scale 1m)

- Plate 107 Grave S8896 and skeleton SK8.3 showing deliberately placed jar, looking south (scale 0.1m)
- Plate 108 Grave S8912 and skeleton SK8.1, looking west (scale 0.5m)
- Plate 109 Northern end of ditch G8083 being cut by grave S12987, looking south-west (scale 1m)
- Plate 110 Structures 21 and 22, looking north-west (scales 2m)
- Plate 111 The eastern quarry complex with the uppermost deposit filling a depression created as the lower deposits settled, looking north-west (scale 1m)
- Plate 112 Grave S12931, looking south-west (scale 1m)
- Plate 113 Grave S14018, looking south-west (scale 0.5m)
- Plate 114 Post-excavation shot of Barrow 9, with quarry fills extant top right, looking north-east (scale 1m)
- Plate 115 Position of grave S14031 containing double burial within barrow 9, looking south-east (scale 1m)
- Plate 116 Double burial within barrow 9 - close up, looking south-east, (scale 0.5m)
- Plate 117 Satellite burial S12969, showing skeletons SK 8.11 and SK 8.12
- Plate 118 Burial S12969: detail of skeleton SK 8.11 showing neonate SK 8.12
- Plate 119 Substantial boundary G4006/5047, looking west (scale 2m)
- Plate 120 Pottery sherds deposited on the base of pit S8211 (scale 0.20m)
- Plate 121 Placed pottery sherds within pit S14276 (scale 0.1m)
- Plate 122 Pottery sherds from plain tall jar at the base of pit S12646, looking north-east (scale 0.5m)
- Plate 123 Complete carinated bowl with flaring rim recovered from upper fills of pit S12646 (scale 0.1m)
- Plate 124 Sheep bones within pit S3956, looking east (scale 0.20m)
- Plate 125 Bones from the lower jaw of a cow recovered from pit S3674 (scale 0.2m)

- Plate 126 Cow skull recovered from pit S14396 (scale 0.2m)
- Plate 127 Dog skeleton recovered from pit S8799 (scale 0.1m)
- Plate 128 Dog skeleton recovered from pit S3767 (scale 0.2m)
- Plate 129 Skeleton SK 8.4 in pit S8934, looking west (scale 0.5m)
- Plate 130 Skeleton SK 8.6 under excavation in pit S8833
- Plate 131 Skeleton SK 8.6 in pit S8833, looking north-east (scale 0.5m)
- Plate 132 Metalled track-way 25 on Plateau 2 showing pronounced wheel-ruts, looking north-east (scale 1m)
- Plate 133 Metalled track-way 25 on Plateau 3 showing hollow-way and trackside ditch, looking north-east (scale 1m)
- Plate 134 Grave S2008 containing skeleton SK 1.26), scale 0.5m (looking south-east)
- Plate 135 Skeleton SK1.26 showing skull in non-anatomically correct position
- Plate 136 Lower portion of burial S10688, looking north-west (scale 0.1m)
- Plate 137 Brooches contained within cremation burial S10688
- Plate 138 Upper portion of burial S10688, looking north-west (scale 0.1m)
- Plate 139 Cremation burial S12315, looking south (scale 0.2m)
- Plate 140 Cremation burial S12355, looking south (scale 0.2m)
- Plate 141 Grave S12312 showing inhumation SK 8.9, looking north (scale 0.2m)
- Plate 142 Grave S12386 showing inhumation SK 8.7, looking west (scale 0.1m)
- Plate 143 Grave S12337 showing inhumation SK 8.10, looking west (scale 0.2m)
- Plate 144 Cremation burial S3614, looking west (scale 0.2m)
- Plate 145 Cremation burial S12749, looking west (scale 0.2m)
- Plate 146 Cremation burial S12813, looking west (scale 0.2m)
- Plate 147 Samian vessels and conical beaker within cremation burial S12813, looking south (scale 0.1m)

- Plate 148 Truncated flagon, jar, hobnail boot and iron tool (FN 8.260) within cremation burial S12813, looking west (scale 0.1m)
- Plate 149 Grave S3469 containing skeleton SK 8.2, looking south (scale 0.5m)
- Plate 150 Grave S3513 containing skeleton SK 8.17, looking east (scale 0.2m)
- Plate 151 Grave S8930 containing skeleton SK 8.8, looking south (scale 0.1m)
- Plate 152 Grave S12161 containing skeleton SK 8.5, looking south (scale 1m)
- Plate 153 Grave S12009 containing skeleton SK 8.13, looking north (scale 0.5m)
- Plate 154 SFB 1 post-excavation, looking west (scale 1m + 2m)
- Plate 155 Cremation burial S2014, looking west (scale 0.2m)
- Plate 156 Cremation burial S2018, looking east (scale 0.2m)
- Plate 157 Cremation burial S2022, looking west (scale 0.2m)
- Plate 158 Cremation burial S2027, looking north-east (scale 0.2m)
- Plate 159 Cremation burial S2122 under excavation looking east (scale 0.2m)
- Plate 160 Cremation burial S2173, looking north (scale 0.2m)
- Plate 161 Cremation burial S2196, looking south-east (scale 0.5m)
- Plate 162 Cremation burial S2365, looking south-east (scale 0.2m)
- Plate 163 Cremation burial S5824, looking north-east (scale 0.2m)
- Plate 164 Cremation burial S5848, looking north (scale 0.2m)
- Plate 165 Cremation burial S5821, looking north (scale 0.5m)
- Plate 166 Cremation burial S3037, looking north-east (scale 0.2m)
- Plate 167 Cremation burial S3094, looking south (scale 0.5m)
- Plate 168 Cremation burial S3102, looking north (scale 0.5m)
- Plate 169 Working shot of SFB 2, looking south
- Plate 170 Fragment of iron chain FN 3.9003
- Plate 171 Fragment of buckelurne

- Plate 172 SFB 3, looking south (scale 1m)
- Plate 173 SFB 4, looking north showing potentially wall line toward the front of the image
- Plate 174 Post-excavation shot of SFB 5, looking north (scale 1m)
- Plate 175 SFB 5, showing metallised surfaces S14226, looking north (scale 1m)
- Plate 176 Anglo-Saxon sceat
- Plate 177 Looking north along Trackway 28 (Plateau 1), with SFB 8 (unexcavated) in foreground
- Plate 178 Trackway 30 with Monkton church in background (Plateau 7)
- Plate 179 Section through Trackway 30 (Plateau 7)
- Plate 180 SFB 77 - G10081 excavated view with half-sectioned 'external' oven (G10116), looking east, scales 1m, 0.5m
- Plate 181 SFB 77 - G10081 excavated view with half-sectioned 'external' oven (G10116), looking north-west, scales 1m, 0.5m
- Plate 182 SFB 78 - G10082 overall view excavated
- Plate 183 SFB 78 - G10082 overall view excavated
- Plate 184 SFB 78 - G10082 showing half-sectioned oven, ditch G10071 in foreground
- Plate 185 SFB 78 - G10082 - detail of oven G10085
- Plate 186 SFB 78 - G10082 - detail of side hearth S10471 showing upright quern stones. Looking west, scale 0.5m
- Plate 187 SFB 75 - G10079 looking west, scales 1m
- Plate 188 SFB 75 - G10079 looking east, scales 1m
- Plate 189 SFB 75 - G10079 - Detail of carved chalk 'cup' (FN 1.131) placed on quern fragment as found. Scale 0.2m
- Plate 190 Site 2 (Plateau 1) Working view showing SFB 23 in foreground, and line of trackway 28 to the rear. Looking north, scale 1m

- Plate 191 SFB 8 - G1085 - partly excavated showing ovens (G1086, G1087) and collapsed 'clunch' in backfill - looking N, scales 1m
- Plate 192 SFB 8 - G1085 - partly excavated showing detail of collapsed 'clunch' in backfill -looking W, scale 0.5m
- Plate 193 SFB 8 - G1085 - partly excavated showing ovens (G1086, G1087) and collapsed 'clunch' in backfill -looking south, scales 1m
- Plate 194 SFB 8 - Detail of oven G1086. Looking north, scale 0.5m
- Plate 195 SFB 8 - Detail of oven G1086 half-sectioned. Looking north, scale 0.5m
- Plate 196 SFB 8 - Detail of oven or side-hearth G1087. Looking north, scale 0.5m
- Plate 197 SFB 8 - G1085 - fully excavated showing ovens (G1086, G1087). Looking west, scales 1m, 0.5m. Note lower working floor in front of oven G1086
- Plate 198 SFB 24 (G1261) fully excavated. Looking west. Scales 0.5m and 0.2m
- Plate 199 SFB 24 (G1261) detail of bisected dog burial. Looking east. Scale 1m
- Plate 200 SFB 7 - G1075. Pre-excavation view. Looking north, scales 1m
- Plate 201 SFB 7 - G1075.- Fully excavated, looking north. Scale 0.5m
- Plate 202 SFB 23 - G1251 - Detail of primary oven S586, showing stake-holes, looking south, scale 0.2m
- Plate 203 SFB 23 - G1251 - excavated, showing rammed chalk floors, secondary oven G1252 top right. Looking west, scale 1m
- Plate 204 SFB 23 - G1251 - detail of secondary oven G1252 cross-sectioned. Looking north-west, scale 0.2m
- Plate 205 Site 2 enclosure ditches under excavation looking south, scale 0.5m. Ditch of Enclosure 15 (G1020) in foreground
- Plate 206 Enclosure 13 and associated features under excavation. Looking north-north-east. Structure 47 in foreground
- Plate 207 Enclosure 13 and associated features under excavation. Looking south. Structure 47 in foreground
- Plate 208 SFB 12 - G1164 fully excavated. Looking east, scale 1m

- Plate 209 SFB 12 - G1164 fully excavated. Looking north, scale 1m
- Plate 210 Enclosure 13, excavation of Structure 47 looking east. One of the ponds has been excavated to the rear
- Plate 211 Structure 47 - G1140. Looking west, scales 1m
- Plate 212 SFB 6 - G1070 during excavation. Looking north. Access ramp in foreground.
- Plate 213 SFB 6 - G1070. Looking south. Scales 1m
- Plate 214 SFB 21 - G1232 and clunch structure S1396, working view looking east
- Plate 215 SFB 21 - G1232 and clunch structure S1396 looking south, scales 1m, 0.5m. Enclosure ditches G1078 in foreground
- Plate 216 SFB 21 - G1232 and clunch structure S1396 looking west scales 1m, 0.5m.
- Plate 217 SFB 21 - G1232 detail of clunch structure S1396 looking west, scales 1m, 0.5m
- Plate 218 SFB 21 - G1232 detail of clunch structure S1396 looking down scales 1m, 0.5m
- Plate 219 SFB 21 - G1232 detail of clunch structure S1396 looking west showing rear slot, scales 0.5m, 0.2m
- Plate 220 SFB 9/11 - G 1298, G 1153 Looking east, showing 'clunch' rubble at southern end. Scales 1m, 0.5m
- Plate 221 Sites 3, 4 and 5 (Plateau 2) under excavation from the air looking west. Site 3 on right, Site 4 bottom left and Site 5 top left. Some of the enclosure ditches are just visible
- Plate 222 SFB 34 - G2073 including oven (S9349). Looking south, scales 1m, 0.5m
- Plate 223 SFB 34 - G2073 detail of oven (S9349). Looking south, scales 1m, 0.5m. Possible wattle impressions evident on interior wall of oven S9349
- Plate 224 Sites 4 and 5 - aerial view of area under excavation. Site 3 is top left, Site 4 top right and Site 5 is bottom.
- Plate 225 Site 4 - excavation under way, SFB 32 in foreground. Looking south

- Plate 226 SFB 32 - G2065 - Detail of oven S2909 looking west towards the stoke-hole. Scales 0.5m, 0.2m. Ditch G2022 of Enclosure 36 cuts across at the base of the photo.
- Plate 227 SFB 32 - G2065 - Detail of clunch 'lumps' S9233. Looking north, scales 1m, 0.5m
- Plate 228 SFB 32 - G2065. Detail of flint spread and quern (S9050). Looking east, scales 1m. 0.5m
- Plate 229 SFB 32 - G2065 excavated, looking east, scale 1m
- Plate 230 SFB 29 - G2058. Partly excavated looking south. Plinth S9093 is under the 1m scale.
- Plate 231 SFB 29 - G2058. Section through remains of possible oven deposits (S9546) on the plinth. Looking east, scale 0.5m
- Plate 232 SFB 31 - G2062 fully excavated looking north. Scale 1.0m
- Plate 233 SFB 31 - G2062 fully excavated looking south. Scales 0.5m, 1.0m. Oven (S9553 has been cross-sectioned
- Plate 234 SFB 31 - G2062 detail of steps in south-east corner, looking south, scale 0.5m. Note slight recess adjacent which could have held a post
- Plate 235 SFB 31 - G2062 detail of steps in south-west corner, looking south, scale 0.5m.
- Plate 236 SFB 31 - G2062 detail of oven S9553
- Plate 237 SFB 31 - G2062 detail of oven S9553 and side 'heath'. Another view
- Plate 238 Excavation of underground chambers G2055
- Plate 239 Excavation of underground chambers G2055
- Plate 240 View of one of the underground chambers G2055. Scales 0.5m
- Plate 241 Excavation of underground chambers (G2040, G2161), showing one of the underground chambers half-sectioned. Looking north-east
- Plate 242 One of the underground chambers (G2055), scales 0.5m
- Plate 243 SFB 36 - G2136. Fully excavated, looking west. Scales 1m, 2m

- Plate 244 SFB 36 - G2136 detail of oven (S2833) with basal flint foundation S2833. Looking west, scale 0.5m
- Plate 245 SFB 38 - G2142 excavated, showing rammed chalk floor (2752). Looking east, scale 2m
- Plate 246 SFB 38 - G2142 excavated, showing rammed chalk floor (2752). Looking west, scale 2m
- Plate 247 SFB 38 - G2142 section through rammed chalk floor (2752). Looking east scale 0.5m
- Plate 248 Well G2135 looking N, scale 0.5m
- Plate 249 View of Site 7 (Plateau 1) under excavation. Site 6 is to the rear left. Looking north-east
- Plate 250 View of Site 7 (Plateau 1) under excavation. Looking south-east
- Plate 251 View of Site 7 (Plateau 1) ditches and other features under excavation. Looking south-west
- Plate 252 Site 7 - excavation of the underground chambers (G1221, G1219, G1228) and other features, looking south
- Plate 253 Structure 50 - G1216, looking west, scale 1m
- Plate 254 Buried pottery vessel G1230, looking west. Scale 0.1m
- Plate 255 Buried pottery vessels G1230 under excavation, looking north-west
- Plate 256 Area between Sites 8 and 9 showing two large sub-circular pits of a possible structure (G1119). Looking east
- Plate 257 Site 9 -View of Site 9 showing Enclosure 16 ditches and erosion hollow G1161. Looking north
- Plate 258 SFB 13 (G1174) - looking west-north west, scales 1m, 0.5m
- Plate 259 SFB 13 (G1174) - detail of eastern chamber looking east, scales 1m, 0.5m
- Plate 260 Well G1143 looking south. Scales 1m
- Plate 261 SFB 40 -G3040 - Site 10. View, near fully excavated looking west, scales 1m, 0.5m

- Plate 262 Recording ditch of Enclosure 45, looking north-west
- Plate 263 SFB 47 - G4109 - fully excavated looking east, scale 1m
- Plate 264 SFB 46 - G4063 - fully excavated looking south, scales 2m, 1m
- Plate 265 SFB 46 - G4063 - Detail of oven G4066 looking SW - scale 0.5m
- Plate 266 SFB 46 - G4063 - Detail of oven G4066 showing flint pad under floor. Looking SW - scale 0.5m
- Plate 267 SFB 45 - G4059, excavated looking N, scales 1m. Prior to excavation of the oven (G4060)
- Plate 268 SFB 45 - G4059, excavated looking N, scales 1m. After excavation of the oven (G4060). Note Iron Age ditch G4006 to left.
- Plate 269 SFB 45 - G4059, excavated looking SW, scales 1m. Note Iron Age ditch G4006 to right
- Plate 270 SFB 45 - G4059 - detail of oven G4060 looking north, scale 1m
- Plate 271 SFB 45 - G4059 - detail of oven G4060 looking north, scales 1m
- Plate 272 SFB 45 - G4059 - detail of oven G4060 construction, scale 0.2m with collapsed wall or oven superstructure deposits to the left
- Plate 273 SFB 44 - G4056 - partly excavated view showing collapsed 'clunch' material. Looking west, scales 1m, 0.5m
- Plate 274 SFB 44 - G4056 - partly excavated view showing collapsed 'clunch' material. Looking east, scales 1m, 0.5m
- Plate 275 SFB 44 - G4056 - fully excavated, entrance on left. Looking west, scales 1m, 0.5m. Note Iron Age ditch G4006 under the floor
- Plate 276 SFB 44 - G4056 - fully excavated, entrance on right Looking east, scales 1m, 0.5m. Note Iron Age ditch G4006 under the floor
- Plate 277 SFB 44 - G4056 - fully excavated, stepped entrance in foregroundt Looking north scales 1m, 0.5m. Note clunch bench (S4848) on north side
- Plate 278 Detail of access steps, looking south. Scales 1m, 0.5m
- Plate 279 SFB 44 - G4056 - detail of bench and part of floor. Looking north, scales 1m, 0.5m

- Plate 280 SFB 44 - G4056 - Working shot of person on stairway Looking south
- Plate 281 SFB 43 - G4053 - View looking west, scales 1m
- Plate 282 SFB 43 - G4053 - View looking east, scales 1m
- Plate 283 Site 12 (Plateau 4) - Aerial view of Enclosures 42 and 43. Looking south-west
- Plate 284 SFB 41; G4046 - fully excavated looking north, scale 1m, 2m
- Plate 285 SFB 41; G4046 - fully excavated looking south scale 1m, 2m. Note access steps lower right and ditch of Encloure 42 (G4004) at top
- Plate 286 SFB 41; G4046 - fully excavated looking west scale 1m, 2m. Note access way S4535 (top right), ditch of Enclosure 42 (G4004) left, bench (top centre) and clunch wall G4049 to right of steps
- Plate 287 SFB 41; G4046 - detail of bench looking west, scale 1m
- Plate 288 SFB 41; G4046 - detail of 'clunch' walls (G4049) forming a compartment in the north-west corner. Looking west, scale 0.2m
- Plate 289 SFB 42 - G4051 - View of quadranted feature looking west, scale 1m
- Plate 290 SFB 59 - G5119 excavated, looking south. Scales 1m, 0.5m. Access ramp in lower right corner
- Plate 291 SFB 59 - G5119 excavated, looking south. Scales 1m, 0.5m. Access ramp in lower right corner
- Plate 292 SFB 59 - Buried pottery vessel S15132 (G5079); west to top, scale 0.1m
- Plate 293 SFB 59 - Buried pottery vessel S15148 (G5079); north-west to top, scale 0.1m
- Plate 294 Cellar G5121 looking west showing roughly stepped access ramp. Scales 1m, 0.5m. SFB 59 directly to the right
- Plate 295 Cess pit G5078 with remains of horse skeleton. Looking south-east, scale 1m, 0.5m
- Plate 296 SFB 53 - G5091 under excavation, looking south-west
- Plate 297 SFB 53 - G5091 excavated, looking south-west

- Plate 298 Enclosure 52 ditch - G5084. The southern terminal, looking north-east, scale 1m
- Plate 299 SFB 49 - G5081 excavated looking south-east. Scales 1m
- Plate 300 SFB 50 - G5082 - The Type 3 structure as excavated looking south-west, scale 1m
- Plate 301 Site 15 - Ditch terminal of Enclosure 69 (G5080) looking south, scale 1m
- Plate 302 SFB 58 - G5100 - oven G5170 prior to excavation looking NE; scale 1m. The stoke/entrance for the oven is clearly visible bottom left.
- Plate 303 SFB 58 - G5100 excavated looking NNW; scales 1m. The ditch of Enclosure 48 (G5069) to the rear
- Plate 304 SFB 58 - G5100 excavated looking SSE; scales 1m. The ditch of Enclosure 48 (G5069) to the foreground
- Plate 305 SFB 58 - G5100 excavated looking north-west; scales 1m
- Plate 306 SFB 58 - G5100; detail of oven G5171
- Plate 307 SFB 58 - G5100 fully excavated (with oven removed) looking NNW; scale 1m. The ditch of Enclosure 48 (G5069) to the rear
- Plate 308 Site 16 -Excavation of features at the northern end of Site 16, looking south-west. Possible SFBs 56, 57 and 63 in foreground
- Plate 309 Site 17 - Aerial view after the topsoil strip showing most features including a water main trench. Looking north-west
- Plate 310 Structure 55: Underground cellar G6048 under excavation. looking north
- Plate 311 Structure 55: Underground cellar G6048. Main access chamber (S6204) excavated showing arch of eastern chamber (S6221), looking south-east, scales 1m, 0.5m. Note earlier (prehistoric) ditch
- Plate 312 Structure 55: Underground cellar G6048. Main access chamber (S6204) excavated, looking south-west, scales 1m, 0.5m
- Plate 313 Structure 55: Underground cellar G6048. Main access chamber (S6204) excavated, looking north-east showing arch of western chamber (S6236), scales 1m, 0.5m

- Plate 314 Structure 55: Underground cellar G6048. Detail of eastern chamber (S6221) looking south-east scale 1m. Note blocking wall on floor at entrance
- Plate 315 Structure 55: Underground cellar G6048. Detail of western (S6236) chamber looking north showing half-excavated fill. Scale 0.5m. Note blocking wall on floor at entrance
- Plate 316 Structure 55: Underground cellar G6048 fully excavated. Looking north-east. Scales 1m, 2m
- Plate 317 SFB 64/67 - main feature G6060 fully excavated. Looking south-east, scales 1m, 2m. Note prehistoric ditch in foreground
- Plate 318 SFB 64/67 - main feature G6060 and fully excavated 'cellar' G6054. Looking south-east, scales 1m, 2m. Note prehistoric ditch in foreground
- Plate 319 SFB 64/67 - main feature G6060 and fully excavated 'cellar' G6054. Looking north, scales 1m, 2m.
- Plate 320 SFB 64/67 - detail of mortar set into north edge. Looking south-east, scale 0.5m
- Plate 321 SFB 68 - G6063 under excavation, looking west, scales 2m. The ditch of Enclosure 58 (G6069) is to the rear
- Plate 322 SFB 68 - G6063 fully excavated, looking south-east, scales 2m. A later ditch of Enclosure 58 (G6069) is to the right
- Plate 323 Site 18 - SFB 69 (G6067). Excavated view looking south, scale 2m
- Plate 324 Site 19 - SFB 62 - (G5142) on Plateau 5, looking south. Scales 1m. Note linear depression (S15551) on east (left) side
- Plate 325 Site 19 - Pit G5143 containing sheep burial. Scales 1m, 0.2m
- Plate 326 SFB 65 (G6103, G6055, G6104) - overview with plant and greenhouse (looking north)
- Plate 327 SFB 65 (G6103, G6055, G6104) - excavated view showing hearth G6104 and platform G6055. Looking NE, scales 1m, 2m. Quarry edge (G6056) is visible across bottom of picture
- Plate 328 SFB 65 (G6103, G6055, G6104) - detail of hearth G6104 looking south-east. Scale 1m

- Plate 329 SFB 65 (G6103, G6055, G6104) - overview fully excavated. Looking NE, scales 2m. Vertical 0.5m scale is on edge of quarry (G6065)
- Plate 330 Site 21 - view of hollow way (Trackway 32 (G7028) with edge of Barrow 2 ditch under. Looking south-west, scale 2m
- Plate 331 Site 21 - view of hollow ways (Trackways 31 and 32 (G7028) with Barrow 2 ditch under. Looking north-east, scale 1m
- Plate 332 SFB 74 - G7031 excavated, looking south-west, scales 1m, 2m
- Plate 333 SFB 81 - GP46 excavated showing oven SP158. Looking north-east, scale 1m
- Plate 334 SFB 81 - GP46. Detail of oven SP158 under excavation showing stoke-hole and beam slot SP146. Looking south-west
- Plate 335 SFB 83 - Horse burial looking north-west, scale 1m
- Plate 336 SFB 80 - G6077 fully excavated looking north-east, scales 1m. Entrance to front.
- Plate 337 SFB 80 - G6077 fully excavated looking south-west, scales 1m. Entrance to rear.
- Plate 338 Structure 59 - The brick Seamark - G6081 under excavation looking north-east towards the Thames Estuary
- Plate 339 Structure 59 - The brick Seamark - G6082 with windmill (Structure 58) cross-trestle foundation (G6079) to rear. Looking south, scales 1m
- Plate 340 Structure 59 - The brick Seamark - G6082 on left with windmill (Structure 58) cross-trestle foundation (G6079) to right. Looking east, scales 1m
- Plate 341 Structure 59 - The brick Seamark - G6082. One of the Seamark scaffold post-holes (S16141) showing post ghost. Looking east, scale 0.5m
- Plate 342 Coin of James I from windmill foundation (G6079)
- Plate 343 Second World War Structure 61 - G4096 looking south-west
- Plate 344 Second World War Structure 61 - G4096 detail of Room 1 and access steps looking south. Scales 1m, 2m

- Plate 345 Second World War Structure 61 - G4096 detail of Room 2 looking east, showing scars on concrete floor
- Plate 346 A nearly complete lump of smithing hearth base
- Plate 347 Micro-structure of a section cut from part of the same plano-convex lump shown in Plate 346
- Plate 348 A smaller, more irregularly shaped piece of apparent smithing hearth waste
- Plate 349 Photomicrograph of part of a section from the apparent smithing hearth waste shown in Plate 348
- Plate 350 Part of the same small lump of smithing hearth waste (Plate 348) showing an 'island' of low carbon bloom iron
- Plate 351 Another irregularly shaped piece of apparent smithing hearth waste
- Plate 352 Photomicrograph of part of a section through the waste lump shown in Plate 351
- Plate 353 Holdfast - found with many fragments of iron-smithing waste (as in Plates 348 and 351)
- Plate 354 Small stud-like piece of iron
- Plate 355 Photomicrograph of the stud-like piece of iron shown in Plate 354
- Plate 356 Very lightweight, generally pale grey, porous, non-magnetic slaggy material
- Plate 357 Close up view of one of the same pieces of lightweight slaggy material (shown in Plate 346)
- Plate 358 Same lightweight slag-like pieces minus adhering sandy loam
- Plate 359 Photomicrograph of a section through one of these pieces of lightweight, pale 'Iron Age grey' fragments of slag-like material
- Plate 360 Fragment of part vitrified lightweight material interpreted here as heavily burnt daub (see Plate 358)
- Plate 361 Photomicrograph of a section through the fragment of lightweight, heavily burnt/part-vitrified suspected daub

- Plate 362 Three free-threshing wheat (s.l.) grains (*Triticum durum/turgidum/aestivum* s.l.) from pit 10454, Plateau 1; ventral, dorsal and side views. (Photographed by James Turner, National Museum of Wales)
- Plate 363 Free-threshing tetraploid wheat rachis fragments from pit 10454, Plateau 1 (*Triticum durum/turgidum*); 2a. Thanet Earth pit 10454; (Photographed by Ruth Pelling, Historic England) 2b. comparing rachis fragments from Greifensee, Switzerland (left) to rachis from Thanet Earth pit 10454, Plateau 1 (right) (Photographed by Stefanie Jacomet, University of Basel)
- Plate 364 Scan of M434, with chalk and humic soil layered Context 6032 overlying chalky layer Context 6033. Note chalk soil contains greyish yellow calcareous silt subsoil material; arrow indicates anomalous presence of organic fragments, etc. Frame width is ~50mm.
- Plate 365 Scan of M434, with layered 'humic' 6030, compact and cemented mixed topsoil and subsoil material in Context 6031 (arrows), and mixed humic and subsoil Context 6032. Frame width is ~50mm.
- Plate 366 Scan of M432, showing layers of loose humic crumbs (Context 6030) overlain by crumbs and fine subangular structures of chalky subsoil. Frame width is ~50mm.
- Plate 367 Scan of M431, which is mainly composed of chalky subsoil and chalk clasts, between two humic soil layers (Contexts 6028 and 6030). Frame width is ~50mm
- Plate 368 Photomicrograph of M434 (Context 6032); humic soil (Ah1 horizon, turf); soil characterised by chalk (Ch), biogenic calcite (BCa) and post-depositional formation of needle calcite (NCa). Plane polarised light (PPL), frame width is ~4.62mm.
- Plate 369 As Plate 368, under crossed polarised light (XPL).
- Plate 370 Detail of Plate 368, showing humic content of turf soil. PPL, frame width is ~0.90mm.
- Plate 371 As Plate 370, under oblique incident light (OIL).
- Plate 372 Photomicrograph of M434 (Context 6032); calcareous silt containing anomalous amounts of humifying and humified plant material (arrows). PPL, frame width is ~2.38mm.
- Plate 373 As Plate 372, under OIL

- Plate 374 Photomicrograph of M433 (Context 6031); note three cemented layers, 3: calcareous silt (loessic drift origin), 2: chalky subsoil, 1: humic turf soil. PPL, frame height is ~4.62mm.
- Plate 375 As Plate 374, under XPL. Note needle calcite within relict root channels (Layer 2) and decalcified humic turf soil.
- Plate 376 As Plate 374, under OIL. Note inclusion of turf fragments in top of Layer 2.
- Plate 377 Photomicrograph of M432 (Context 6030); humic soil fragments (crumbs and fine subangular blocky); note biogenic calcite pseudomorphs of root (?) trace (arrow). PPL, frame width is ~4.62mm.
- Plate 378 As Plate 377, under XPL
- Plate 379 Detail of Andrews, Dury, and Herbert's map of 1769
- Plate 380 Detail of a navigational chart at SCTL, dated 1786. Note that the chart is incorrect in still showing the beacon at Monkton as a Mill, several years after its removal
- Plate 381 Fold-out engraving of illustrations of sights awaiting holidaymakers travelling down the Thames Estuary, from GA Cooke's Topographical and Statistical Description of the County of Kent (New Edition), 1840 (SCTL)
- Plate 382 Detail of the Monkton Sea-mark from GA Cooke's Topographical and Statistical Description of the County of Kent (New Edition), 1840 (SCTL)
- Plate 383 View of the Monkton Beacon from Igglesden (1932, 77)
- Plate 384 Photograph of the beacon, possibly on the eve of its demolition in 1922
- Plate 385 The North Down Beacon, soon after its reconstruction in 1818; J. Shury after G. Varlo, published May 1820



Plate 1. Aerial view of site looking south



Plate 1. Aerial view of site looking south-east



Plate 3. Topsoil strip of Plateaus 2 & 4 looking east.



Plate 4. Topsoil strip of Plateaus 2 & 4 looking south-east.



Plate 5. Topsoil strip - Plateau 4.



Plate 6. Topsoil strip - Plateau 4.



Plate 7. Aerial view of site looking west, some time into the excavation program (Jan 2008).



Plate 8. Preliminary metal detecting.



Plate 9. Topsoil stripping.



Plate 10. Topsoil stripping.



Plate 11. Surveying with GPS.



Plate 12. Forming the level plateaus after archaeological investigation.



Plate 13. Excavating the pipeline trench just north of Monkton Road Farm.



Plate 14. Downland landscape traversed by the pipeline trench. North of Little Brooksend, looking south towards Thanet Earth.



Plate 15. The plateau south of Birchington traversed by the pipeline trench. Looking north-east towards Birchington.



Plate 16. Photographing the Plateau 7 barrows with a boom lift or 'cherry picker'.



Plate 17. The 2012 Plateau 1 extension area under excavation looking west



Plate 18. Early Neolithic pit S10454, looking north (scale 0.5m).



Plate 19. Early Neolithic pit S12304, looking east (scale 0.5m).



Plate 20. Early Neolithic pit S3941, looking south (scale 0.5m).



Plate 21. Barrow 1 before excavation looking north-west (scale 2m).



Plate 22. Barrow 1 before excavation looking south (scale 2m).



Plate 23. Barrow 1 during excavation looking south.



Plate 24. Barrow 1 excavated looking south (scales 2m).



Plate 25. Barrow 1 from the air, south to top.



Plate 26. Barrow 1. Section of inner ring ditch G6005.



Plate 27. Barrow 1. Section of inner ring ditch G6005 v2.



Plate 28. Barrow 1. Section of outer ring ditch G6006.



Plate 29. Barrow 1. Section of outer ring ditch G6006 v2.



Plate 30. Barrow 1. The inner & outer ditches.



Plate 31. Barrow 1. Burial G6004; excavated looking south-east (scale 0.2m).



Plate 32. Barrow 1. Burial G6004; Skeleton S6.1 being excavated looking south (scale 0.2m).



Plate 33. Barrow 1. Burial G6004; detail of crushed beaker (FN 6.9000).



Plate 34. Barrow 1. Burial G6004; Skeleton S6.1 disposition of grave goods (scale 0.2m).



Plate 35. Barrow 1. Burial G6004; the grave goods (scale 0.2m).



Plate 36. Barrow 2 under excavation, looking south.



Plate 37. Barrow 2. Section (showing medieval hollow way to right/left); looking north-east (scale 2m).



Plate 38. Barrow 2 under excavation, looking south.



Plate 39. Barrows 2 & 3 from the air; north to top.



Plate 40. Barrow 2. Section showing carbon rich layer G7004 (scale 1m).



Plate 41. Burials S7143 & S7151 within the Barrow 2 ring-ditch, looking north-east (scale 0.2m).



Plate 42. Burial S7143 within the Barrow 2 ring-ditch. Detail of skeleton looking south-east (scale 0.1m).



Plate 43. Burial S7573 within the Barrow 2 ring-ditch, looking north-east (scale 0.2m).



Plate 44. Burial S7157 within the Barrow 2 ring-ditch. Detail of skeleton looking north-east (scale 0.5m).



Plate 45. Barrow 3 before excavation, looking south-east.



Plate 46. Barrow 3, selected section (scale 1m). Shows disturbed levels at base of ditch & dark 'midden fill' (G7010).



Plate 47. Barrow 3 excavated with Barrow 2 in background, looking south-east (scales 2m).



Plate 48. Barrow 4 excavated, looking north-west (scales 2m).



Plate 49. Barrow 4 excavated, from the air, south-west to top. Post-medieval windmill & Seamark foundations visible to lower right (Chapter 8).



Plate 50. Barrow 4; central grave G6007, looking north (scales 0.5m & 1m).



Plate 51. Barrow 5 excavated, looking east (scales 1m).



Plate 52. Barrow 5. Grave S3264, looking north-west (scale 0.5m).



Plate 53. Barrow 5. Grave S3267, looking north-east (scale 0.5m).



Plate 54. Barrow 6 under excavation looking west.



Plate 55. Excavation of features (Roman cremation burials) in the vicinity of Barrow 6, looking south-west.



Plate 56. Enclosure 3 looking north-west.



Plate 57. Enclosure 3 ditch section; terminal.



Plate 58. Beaker burial G2000, looking north-west (scale 0.5m).



Plate 59. Beaker burial G3004, looking south-west (scale 0.2m).



Plate 60. Beaker burial G4043, looking south-west (scale 1m). Detail of beaker inset.



Plate 61. Beaker burial G10003, looking north-west (scale 0.2m).



Plate 62. Beaker burial S10824, looking north-east (scale 0.2m).



Plate 63. Beaker burial S10843, looking south-west (scale 0.2m).



Plate 64. Beaker burial S10843, looking south-east (scale 0.2m).



Plate 65. Beaker burial S10843, detail of beaker pot 10845 (scale 0.1m).



Plate 66. Beaker burial S10838, looking north-east (scale 0.2m).



Plate 67. Beaker burial S10838, looking north-east; detail of skeleton (scale 0.2m).



Plate 68. Excavation of the 'Pond Barrow' G2003, looking north.



Plate 69. Excavation of the 'Pond Barrow' G2003, looking west (after removal of metalling).



Plate 70. Pond Barrow' G2003, Feature S2475.



Plate 71. 'Pond Barrow' G2003, Feature S2475.



Plate 72. 'Pond Barrow' G2003, The Palstave as found.



Plate 73. 'Pond Barrow' G2003, The Palstave.



Plate 74. Inhumation burials G1173; General view of the burials & ditches under excavation, looking south-east. The shallow nature of burial S1597 (foreground) in particular can be seen.



Plate 75. Inhumation burials G1173; detail of burial S1567.



Plate 76. Inhumation burials G1173; detail of burial S1597.



Plate 77. Excavation in area of Enclosure 2 (Plateau 5) looking north.



Plate 78. Enclosure 1 - mid to late Bronze Age pits S5281 & S5260 looking south-west (scale 1m).



Plate 79. Barrow 8. Overall view excavated, looking north (scales 2m).



Plate 80. Barrow 7. Overall view excavated, looking south.



Plate 81. Barrow 7. Aerial view, north to top.



Plate 82. Barrow 10 (pipeline). Overall view excavated.



Plate 83. Aerial photograph showing the Plateau 8 Iron Age settlement, looking south-west.



Plate 84. Pit 8722 under excavation, looking north.



Plate 85. Pit 8722 showing sequence of fills, looking west (scale 1m).



Plate 86. Pit 8722 showing alcove cut into base, looking west (scale 1m).



Plate 87. Pit 8722 post-excavation, looking north-west (scales 1m & 0.5m).

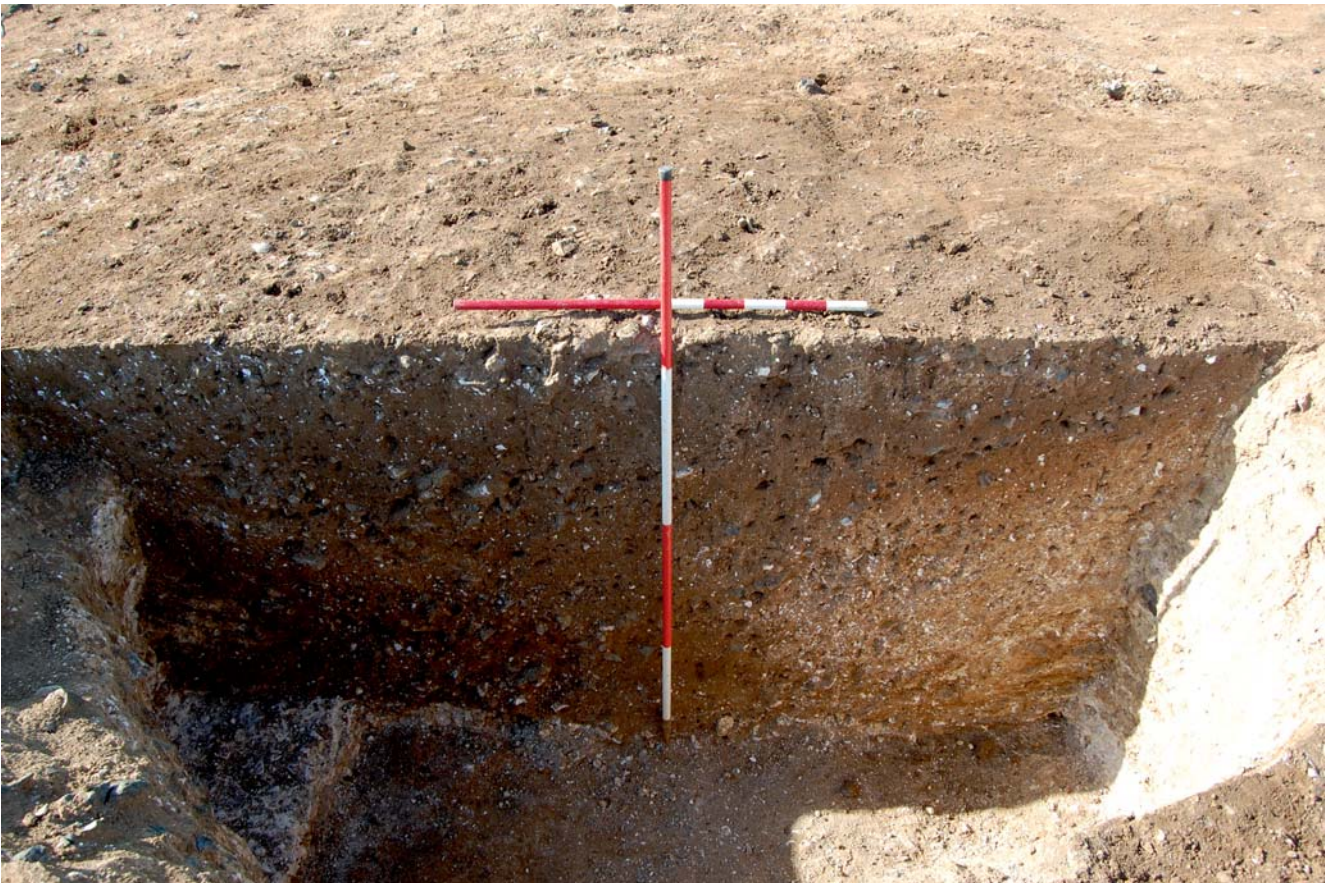


Plate 88. Pit 8670, looking south (scale 1m).



Plate 89. Pit 8642, looking east (scale 1m).



Plate 90. Pit 8189, looking south-west (scale 1m).



Plate 91. Pit 8762, looking west (scale 1m).



Plate 92. Pit 8799, looking west (scale 1m).



Plate 93. Pits S3596, S3602 & S3668, looking north-west (scale 1m).



Plate 94. Pit S8733 looking east (scale 1m).



Plate 95. Pit S3584 looking east (scale 0.5m).



Plate 96. Pit S14240 looking north (scale 1m).



Plate 97. Pit S8308 looking south-east (scale 1m).



Plate 98. Pit S3500 showing stakeholes in base, looking west (scale 1m).



Plate 99. Pit S8222 & post-hole S8223, looking south-west (scales 1m & 0.2m).



Plate 100. Consolidation deposit formed largely by burnt flint in the top of pit 8722, looking north (scale 1m).



Plate 101. Consolidation deposit formed largely by burnt flint in the top of pit 8901, looking east (scale 1m).



Plate 102. Loomweight in pit S3644 (scale 0.2m).



Plate 103. Sub-circular enclosure 1 after excavation, looking north (scale 1m).



Plate 104. Sub-circular enclosure 2 after excavation, looking south (scale 1m).



Plate 105. Sub-circular enclosure 3 pre-excitation, looking north-west (scale 1m).



Plate 106. Sub-rectangular pit S12388 in G8202 showing compacted fill of burnt flint, looking east (scale 1m).



Plate 107. Grave S8896 & skeleton SK8.3 showing deliberately placed jar, looking south (scale 0.1m).



Plate 108. Grave S8912 & skeleton SK8.1, looking west (scale 0.5m).



Plate 109. Northern end of ditch G8083 being cut by grave S12987, looking south-west (scale 1m).



Plate 110. Structures 21 & 22, looking north-west (scales 2m).



Plate 111. The eastern quarry complex with the uppermost deposit filling a depression created as the lower deposits settled, looking north-west (scale 1m).



Plate 112. Grave S12931, looking south-west (scale 1m).



Plate 113. Grave S14018, looking south-west (scale 0.5m).



Plate 114. Post-excavation shot of Barrow 9, with quarry fills extant top right, looking north-east (scale 1m).



Plate 115. Position of grave S14031 containing double burial within Barrow 9, looking south-east (scale 1m).



Plate 116. Double burial within Barrow 9 - close up, looking south-east (scale 0.5m).

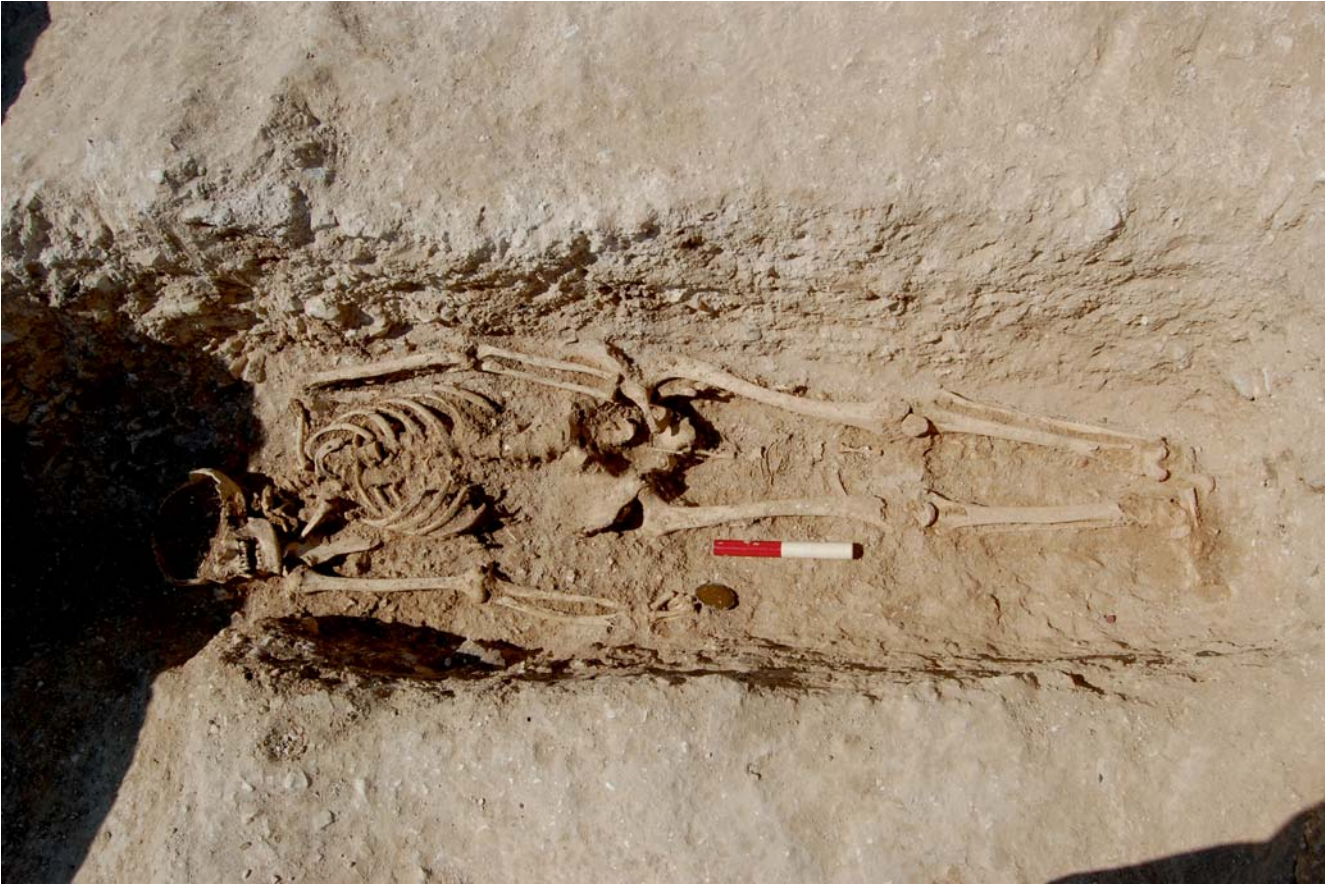


Plate 117. Satellite burial S12969, showing skeletons SK 8.11 & SK 8.12.



Plate 118. Burial S12969: detail of skeleton SK 8.11 showing neonate SK 8.12.

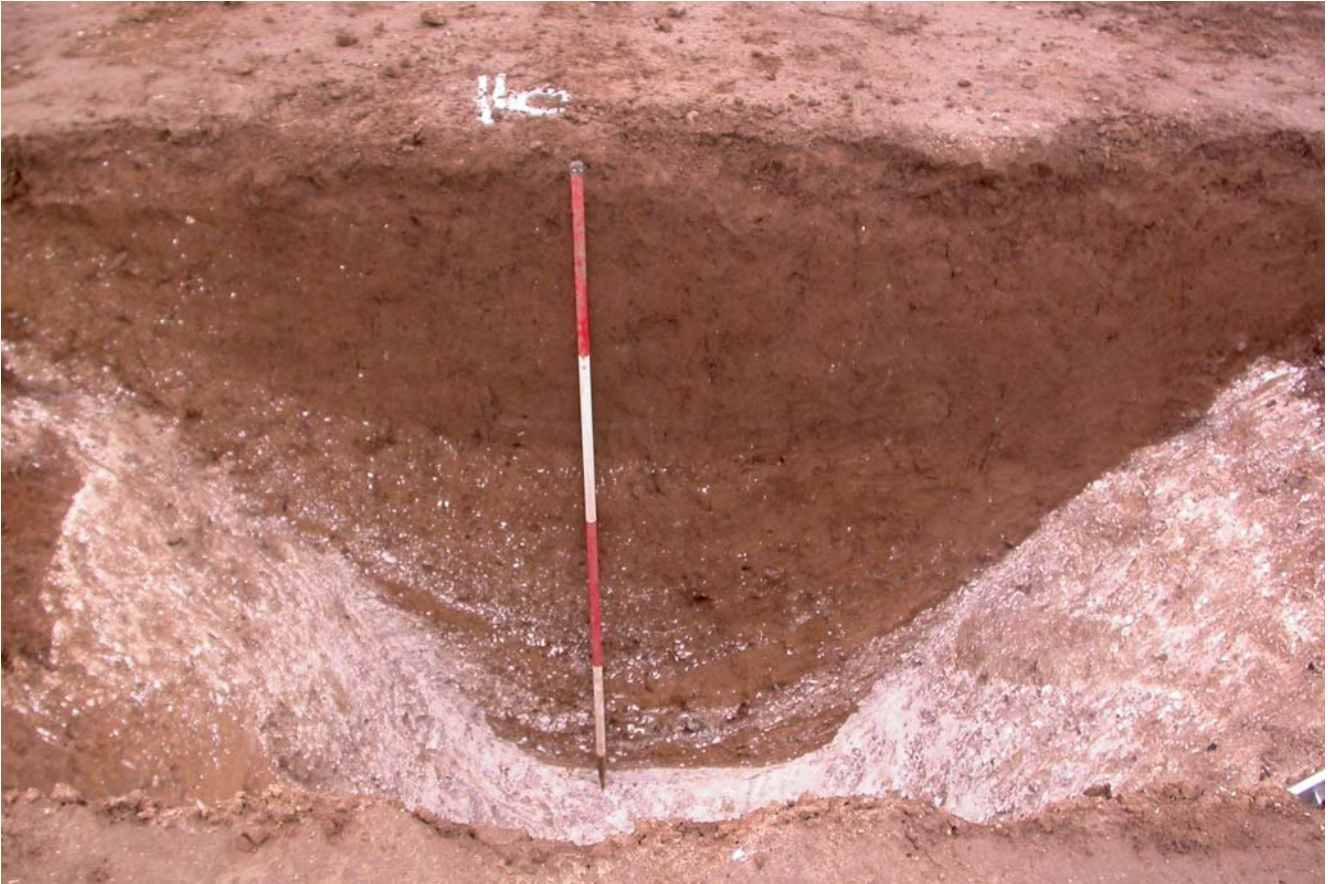


Plate 119. Substantial boundary G4006/5047, looking west (scale 2m).



Plate 120. Pottery sherds deposited on the base of pit S8211 (scale 0.2m).



Plate 121. Placed pottery sherds within pit S14276 (scale 1m).



Plate 122. Pottery sherds from plain tall jar at the base of pit S12646, looking north-east (scale 0.5m).



Plate 123. Complete carinated bowl with flaring rim recovered from upper fills of pit S12646 (scale 0.1m).



Plate 124. Sheep bones within pit S3956, looking east (scale 0.2m).



Plate 125. Bones from the lower jaw of a cow recovered from pit S3674 (scale 0.2m).



Plate 126. Cow skull recovered from pit S14396 (scale 0.2m).



Plate 127. Dog skeleton recovered from pit S8799 (scale 0.1m).



Plate 128. Dog skeleton recovered from pit S3767 (scale 0.2m).



Plate 129. Skeleton SK 8.4 in pit S8934, looking west (scale 0.5m).



Plate 130. Skeleton SK 8.6 under excavation in pit S8833.



Plate 131. Skeleton SK 8.6 in pit S8833, looking north-east (scale 0.5m).



Plate 132. Metallised trackway 25 on Plateau 2 showing pronounced wheel-ruts, looking north-east (scale 1m).



Plate 133. Metalled trackway 25 on Plateau 3 showing hollow-way & trackside ditch, looking north-east (scale 1m).



Plate 134. Grave S2008 containing skeleton SK 1.26, looking south-east (scale 0.5m).



Plate 135. Skeleton SK 1.26 showing skull in non-anatomically correct position.



Plate 136. Lower portion of burial S10688, looking north-west (scale 0.1m).



Plate 137. Brooches contained within cremation burial S10688.



Plate 138. Upper portion of burial S10688, looking north-west (scale 0.1m).



Plate 139. Cremation burial S12315, looking south (scale 0.2m).



Plate 140. Cremation burial S12355, looking south (scale 0.2m).



Plate 141. Grave S12312 showing inhumation SK 8.9, looking north (scale 0.2m).



Plate 142. Grave S12386 showing inhumation SK 8.7, looking west (scale 0.1m).



Plate 143. Grave S12337 showing inhumation SK 8.10, looking west (scale 0.2m).



Plate 144. Cremation burial S3614, looking west (scale 0.2m).



Plate 145. Cremation burial S12749, looking west (scale 0.2m).



Plate 146. Cremation burial S12813, looking west (scale 0.2m).



Plate 147. Samian vessels & conical beaker within cremation burial S12813, looking south (scale 0.1m).



Plate 148. Truncated flagon, jar, hobnail boot & iron tool (FN 8.260) within cremation burial S12813, looking west (scale 0.1m).



Plate 149. Grave S3469 containing skeleton SK 8.2, looking south (scale 0.5m).



Plate 150. Grave S3513 containing skeleton SK 8.17, looking east (scale 0.2m).



Plate 151. Grave S8930 containing skeleton SK 8.8, looking south (scale 0.1m).



Plate 152. Grave S12161 containing skeleton SK 8.5, looking south (scale 1m).



Plate 153. Grave S12009 containing skeleton SK 8.13, looking north (scale 0.5m).



Plate 154. SFB 1 post-excavation, looking west (scales 1m & 2m).



Plate 155. Cremation burial S2014, looking west (scale 0.2m).



Plate 156. Cremation burial S2018, looking east (scale 0.2m).



Plate 157. Cremation burial S2022, looking west (scale 0.2m).



Plate 158. Cremation burial S2027, looking north-east (scale 0.2m).



Plate 159. Cremation burial S2122 under excavation looking east (scale 0.2m).



Plate 160. Cremation burial S2173, looking north (scale 0.2m).



Plate 161. Cremation burial S2196, looking south-east (scale 0.5m).



Plate 162. Cremation burial S2365, looking south-east (scale 0.2m).



Plate 163. Cremation burial S5824, looking north-east (scale 0.2m).



Plate 164. Cremation burial S5848, looking north (scale 0.2m).



Plate 165. Cremation burial S5821, looking north (scale 0.5m).



Plate 166. Cremation burial S3037, looking north-east (scale 0.2m).



Plate 167. Cremation burial S3094, looking south (scale 0.5m).



Plate 168. Cremation burial S3102, looking north (scale 0.5m).



Plate 169. Working shot of SFB 2, looking north.



Plate 170. Fragment of iron chain FN 3.9003.



Plate 171. Fragment of buckelurne.



Plate 172. SFB 3, looking south (scale 1m).



Plate 173. SFB 4, looking north showing potentially wall line towards the front of the image.



Plate 174. Post-excavation shot of SFB 5, looking north (scale 1m).



Plate 175. SFB 5, showing metalised surfaces S14226, looking north (scale 1m).



TEP8EX07 (3938) Find 110. Scale: 2mm grid squares

Plate 176. Anglo-Saxon sceat.



Plate 177. Looking north along Trackway 28 (Plateau 1), with SFB 8 (unexcavated) in foreground.



Plate 178. Trackway 30 with Monkton church in background (Plateau 7).



Plate 179. Section through Trackway 30 (Plateau 7).



Plate 180. SFB 77 - G10081 excavated view with half-sectioned 'external' oven (G10116), looking east (scales 1m & 0.5m).



Plate 181. SFB 77 - G10081 excavated view with half-sectioned 'external' oven (G10116), looking north-west (scales 1m & 0.5m).



Plate 182. SFB 78 - G10082 overall view excavated.



Plate 183. SFB 78 - G10082 overall view excavated.



Plate 184. SFB 78 - G10082 showing half-sectioned oven, ditch G10071 in foreground.



Plate 185. SFB 78 - G10082 - detail of oven G10085.



Plate 186. SFB 78 - G10082 - detail of side hearth S10471 showing upright quern stones, looking west (scale 0.5m).



Plate 187. SFB 75 - G10079 looking west (scales 1m).



Plate 188. SFB 75 - G10079, looking east (scales 1m).



Plate 189. SFB 75 - G10079 - Detail of carved chalk 'cup' (FN 1.131) placed on quern fragment as found (scale 0.2m).



Plate 190. Site 2 (Plateau 1) working view showing SFB 23 in foreground & line of Trackway 28 to the rear, looking north (scale 1m).



Plate 191. SFB 8 - G1085 - partly excavated showing ovens (G1086 & G1087) & collapsed 'clunch' in backfill, looking north (scales 1m).



Plate 192. SFB 8 - G1085 - partly excavated showing detail of collapsed 'clunch' in backfill, looking west (scale 0.5m).



Plate 193. SFB 8 - G1085 - partly excavated showing ovens (G1086 & G1087) & collapsed 'clunch' in backfill, looking south (scales 1m).



Plate 194. SFB 8 - Detail of oven G1086, looking north (scale 0.5m).



Plate 195. SFB 8 - Detail of oven G1086 half-sectioned, looking north (scale 0.5m).



Plate 196. SFB 8 - Detail of oven or side-hearth G1087, looking north (scale 0.5m).



Plate 197. SFB 8 - G1085 - fully excavated showing ovens (G1086 & G1087), looking west (scales 1m & 0.5m). Note lower working floor in front of oven G1086.



Plate 198. SFB 24 (G1261) fully excavated, looking west (scales 0.5m & 0.2m).



Plate 199. SFB 24 (G1261). Detail of bisected dog burial, looking east (scale 1m).



Plate 200. SFB 7 (G1075). Pre-excavation view, looking north (scales 1m).



Plate 201. SFB 7 (G1075). Fully excavated, looking north (scale 0.5m).



Plate 202. SFB 23 (G1251). Detail of primary oven S586 showing stake-holes, looking south (scale 0.2m).



Plate 203. SFB23 (G1251). Excavated, showing rammed chalk floors, secondary oven G1252 top right, looking west (scale 1m).



Plate 204. SFB 23 (G1251). Detail of secondary oven G1252 cross-sectioned, looking north-west (scale 0.2m).



Plate 205. Site 2 enclosure ditches under excavation, looking south (scale 0.5m). Ditch of Enclosure 15 (G1020) in foreground.



Plate 206. Enclosure 13 & associated features under excavation, looking north-north-east. Structure 47 in foreground.



Plate 207. Enclosure 13 & associated features under excavation, looking south. Structure 47 in foreground.



Plate 208. SFB 12 (G1164) fully excavated, looking east (scale 1m).



Plate 209. SFB 12 (G1164) fully excavated, looking north (scale 1m).



Plate 210. Enclosure 13, excavation of Structure 47 looking east. One of the ponds has been excavated to the rear.



Plate 211. Structure 47 (G1140), looking west (scales 1m).



Plate 212. SFB 6 (G1070) during excavation, looking north. Access ramp in foreground.



Plate 213. SFB 6 (G1070), looking south (scales 1m).



Plate 214. SFB 21 (G1232) & 'clunch' structure S1396, working view looking east.



Plate 215. SFB 21 (G1232) & 'clunch' structure S1396, looking south (scales 1m & 0.5m). Enclosure ditches G1078 in foreground.



Plate 216. SFB 21 (G1232) & 'clunch' structure S1396, looking west (scales 1m & 0.5m).



Plate 217. SFB 21 (G1232) detail of 'clunch' structure S1396, looking west (scales 1m & 0.5m).



Plate 218. SFB 21 (G1232) detail of 'clunch' structure S1396, looking down (scales 1m & 0.5m).



Plate 219. SFB 21 (G1232) detail of 'clunch' structure S1396, looking west showing rear slot (scales 0.5m & 0.2m).

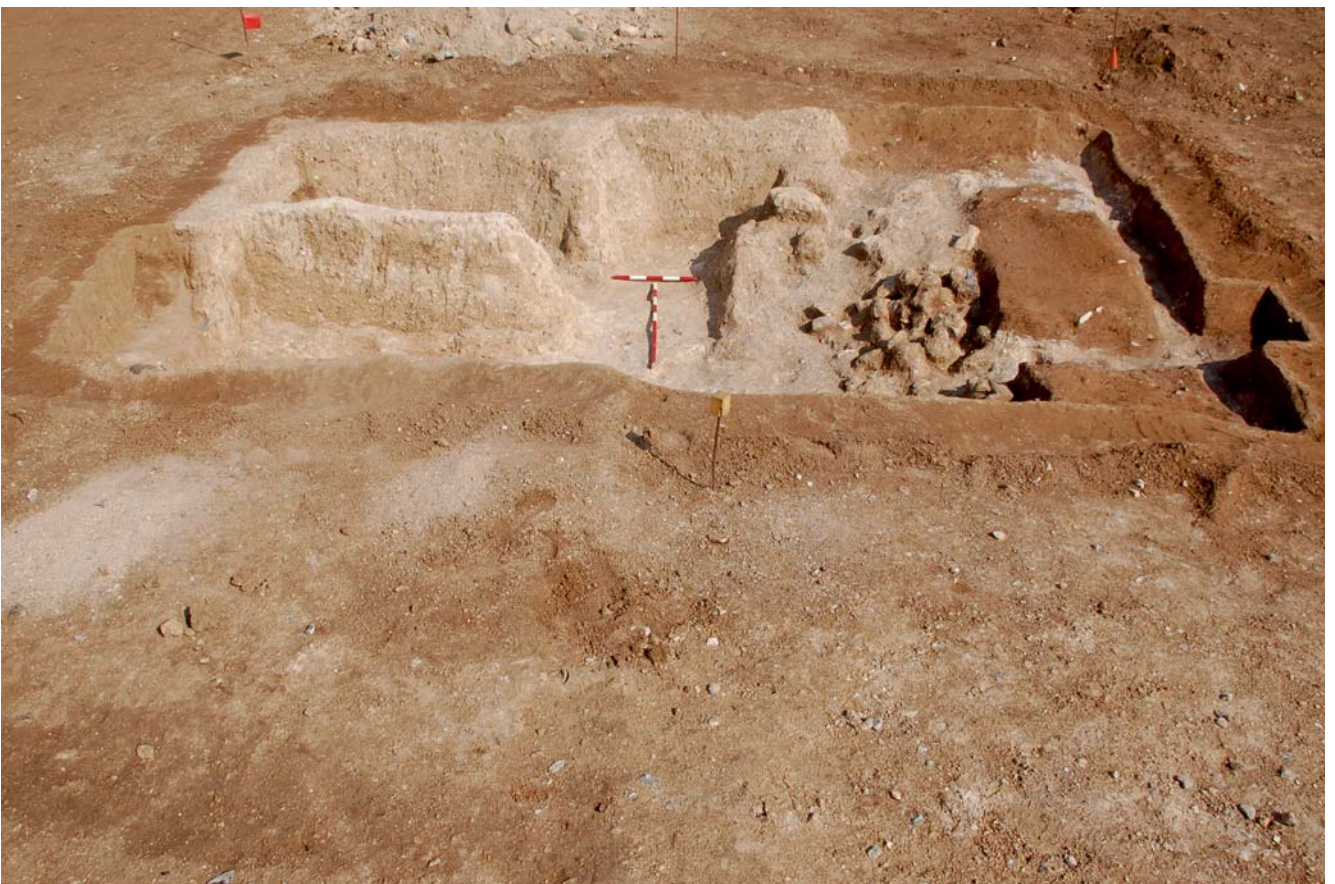


Plate 220. SFB 9/11 (G1298 & G1153) showing 'clunch' rubble at southern end, looking east (scales 1m & 0.5m).



Plate 221. Sites 3, 4 & 5 (Plateau 2) under excavation from the air looking west. Site 3 on the right, Site 4 bottom left & Site 5 top left. some of the enclosure ditches are just visible.



Plate 222. SFB 34 (G2073) including oven (S9349), looking south (scales 1m & 0.5m).



Plate 223. SFB 34 (G2073) detail of oven (S9349), looking south (scales 1m & 0.5m). Possible wattle impressions evident on interior wall of oven.



Plate 224. Sites 4 & 5, aerial view of area under excavation. Site 3 is top left, Site 4 top right & Site 5 is bottom.



Plate 225. Site 4 excavation under way, SFB 32 in the foreground, looking south.



Plate 226. SFB 32 (G2065). Detail of oven S2909 looking west towards the stoke-hole (scales 0.5m & 0.2m). Ditch G2022 of Enclosure 36 cuts across at the base of the photo.



Plate 227. SFB 32 (G2065). Detail of 'clunch lumps' S9233, looking north (scales 1m & 0.5m).



Plate 228. SFB 32 (G2065). Detail of flint spread & quern (S9050), looking east (scales 1m & 0.5m).



Plate 229. SFB 32 (G2065) excavated, looking east (scale 1m).



Plate 230. SFB 29 (G2058). Partly excavated looking south. Plinth S9093 is under the 1m scale.



Plate 231. SFB 29 (G2058). Section through remains of possible oven deposits (S9546) on the plinth, looking east (scale 0.5m).



Plate 232. SFB 31 (G2062) fully excavated, looking north (scale 1m).



Plate 233. SFB 31 (G2062) fully excavated, looking south (scales 0.5m & 1m). Oven (S9553) has been cross-sectioned.



Plate 234. SFB 31 (G2062). Detail of steps in south-east corner, looking south (scale 0.5m). Note slight recess adjacent which could have held a post.



Plate 235. SFB 31 (G2062). Detail of steps in south-west corner, looking south (scale 0.5m).



Plate 236. SFB 31 (G2062). Detail of oven S9553.



Plate 237. SFB 31 (G2062). Detail of oven S9553 & side 'hearth'. Another view.



Plate 238. Excavation of underground chambers G2055.



Plate 239. Excavation of underground chambers G2055.



Plate 240. View of one of the underground chambers G2055 (scales 0.5m).



Plate 241. Excavation of underground chambers (G2040 & G2161), showing one of the underground chambers half-sectioned, looking north-east.



Plate 242. One of the underground chambers G2055 (scales 0.5m).



Plate 243. SFB 36 (G2136). Fully excavated, looking west (scales 1m & 2m).



Plate 244. SFB 36 (G2136). Detail of oven (S2833) with basal flint foundation S2833, looking west (scale 0.5m).



Plate 245. SFB 38 (G2142) excavated, showing rammed chalk floor (2752), looking east (scale 2m).



Plate 246. SFB 38 (G2142) excavated, showing rammed chalk floor (2752), looking west (scale 2m).



Plate 247. SFB 38 (G2142) section through rammed chalk floor (2752), looking east (scale 0.5m).



Plate 248. Well (G2135), looking north (scale 0.5m).



Plate 249. View of Site 7 (Plateau 1) under excavation. Site 6 is to the rear left, looking north-east.



Plate 250. View of Site 7 (Plateau 1) under excavation, looking south-east.



Plate 251. View of Site 7 (Plateau 1) ditches & other features under excavation, looking south-west.



Plate 252. Site 7, excavation of the underground chambers (G1221, G1219 & G1228) & other features, looking south.



Plate 253. Structure 50 (G1216), looking west (scale 1m).



Plate 254. Buried pottery vessel G1230, looking west (scale 0.1m).



Plate 255. Buried pottery vessels G1230 under excavation, looking north-west.



Plate 256. Area between Sites 8 & 9 showing two large sub-circular pits of a possible structure (G1119), looking east.



Plate 257. View of Site 9 showing Enclosure 16 ditches & erosion hollow G1161, looking north.



Plate 258. SFB 13 (G1174), looking west-north-west (scales 1m & 0.5m).



Plate 259. SFB 13 (G1174). Detail of eastern chamber, looking east (scales 1m & 0.5m).



Plate 260. Well (G1143), looking south (scales 1m).



Plate 261. SFB 40 (G3040) Site 10. View near fully excavated, looking west (scales 1m & 0.5m).



Plate 262. Recording ditch of Enclosure 45, looking north-west.



Plate 263. SFB 47 (G4109), fully excavated, looking east (scale 1m).



Plate 264. SFB 46 (G4063), fully excavated, looking south (scales 2m & 1m).



Plate 265. SFB 46 (G4063). Detail of oven G4066, looking south-west (scale 0.5m).



Plate 266. SFB 46 (G4063). Detail of oven G4066 showing flint pad under floor, looking south-west (scale 0.5m).



Plate 267. SFB 45 (G4059), excavated, looking north (scales 1m). Prior to excavation of the oven (G4060).



Plate 268. SFB 45 (G4059), excavated, looking north (scales 1m). After excavation of the oven (G4060). Note Iron Age ditch (G4006) to left.



Plate 269. SFB 45 (G4059), excavated, looking south-west (scales 1m). Note Iron Age ditch (G4006) to right.



Plate 270. SFB 45 (G4059). Detail of oven (G4060), looking north (scale 1m).



Plate 271. SFB 45 (G4059). Detail of oven (G4060), looking north (scales 1m).



Plate 272. SFB 45 (G4059). Detail of oven G4060 construction (scale 0.2m) with collapsed wall or oven superstructure deposits to the left.



Plate 273. SFB 44 (G4056). Partly excavated view showing collapsed 'clunch' material, looking west (scales 1m & 0.5m).



Plate 274. SFB 44 (G4056). Partly excavated view showing collapsed 'clunch' material, looking east (scales 1m & 0.5m).



Plate 275. SFB 44 (G4056). Fully excavated, entrance on left, looking west (scales 1m & 0.5m). Note Iron Age ditch (G4006) under the floor.



Plate 276. SFB 44 (G4056). Fully excavated, entrance on right, looking east (scales 1m & 0.5m). Note Iron Age ditch (G4006) under the floor.



Plate 277. SFB 44 (G4056). Fully excavated, stepped entrance in foreground, looking north (scales 1m & 0.5m). Note 'clunch' bench (S4848) on the north side.



Plate 278. Detail of access steps, looking south (scales 1m & 0.5m).



Plate 279. SFB 44 (G4056). Detail of bench & part of floor, looking north (scales 1m & 0.5m).



Plate 280. SFB 44 (G4056). Working shot of person on stairway, looking south.



Plate 281. SFB 43 (G4053). View looking west (scales 1m).



Plate 282. SFB 43 (G4053). View looking east (scales 1m).



© Canterbury Archaeological Trust Ltd. November 2007

Plate 283. Site 12 (Plateau 4). Aerial view of Enclosures 42 & 43, looking south-west.



Plate 284. SFB 41 (G4046). Fully excavated, looking north (scales 1m & 2m).



Plate 285. SFB 41 (G4046). Fully excavated, looking south (scales 1m & 2m). Note access steps lower right & ditch of Enclosure 42 (G4004) at top.



Plate 286. SFB 41 (G4046). Fully excavated, looking west (scales 1m & 2m). Note access way S4535 (top right), ditch of Enclosure 42 (G4004) left, bench (top centre) & 'clunch' wall (G4049) to right of steps.

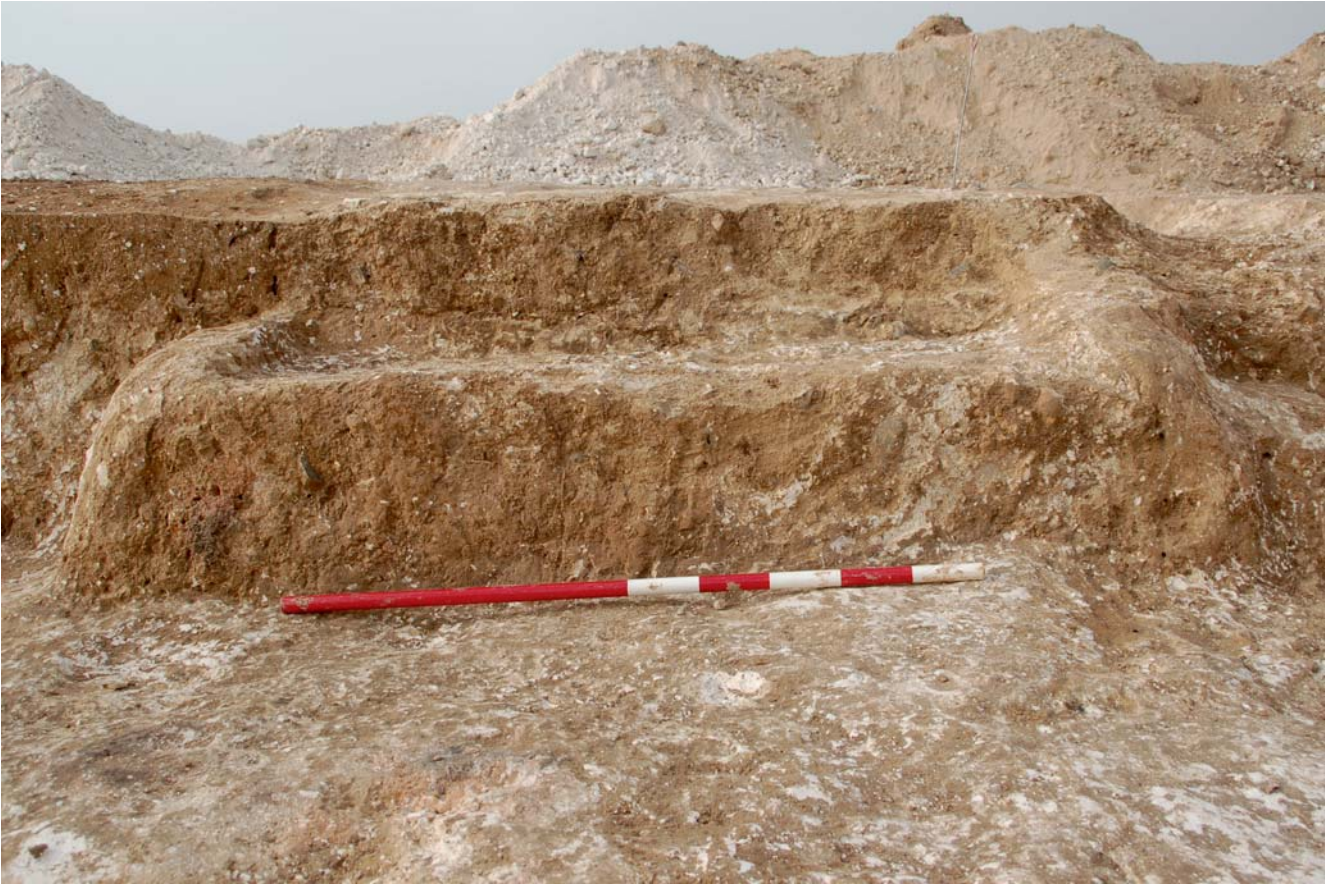


Plate 287. SFB 41 (G4046). Detail of bench looking west (scale 1m).



Plate 288. SFB 41 (G4046). Detail of 'clunch' walls (G4049) forming a compartment in the north-west corner, looking west (scale 0.2m).



Plate 289. SFB 42 (G4051). View of quadranted feature, looking west (scale 1m).



Plate 290. SFB 59 (G5119) excavated, looking south (scales 1m & 0.5m). Access ramp in lower right corner.



Plate 291. SFB 59 (G5119) excavated, looking north (scales 1m & 0.5m). Access ramp in top left corner.



Plate 292. SFB 59. Buried pottery vessel S15132 (G5079), west to top (scale 0.1m).



Plate 293. SFB 59. Buried pottery vessel S15148 (G5079), north-west to top (scale 0.1m).



Plate 294. Cellar (G5121) looking west showing roughly stepped access ramp (scales 1m & 0.5m). SFB 59 directly to the right.



Plate 295. Cess pit (G5078) with remains of horse skeleton, looking south-east (scales 1m & 0.5m).



Plate 296. SFB 53 (G5091) under excavation, looking south-west.



Plate 297. SFB 53 (G5091) excavated, looking south-west.



Plate 298. Enclosure 52 ditch (G5084). The southern terminal, looking north-east (scale 1m).



Plate 299. SFB 49 (G5081) excavated, looking south-east (scales 1m).



Plate 300. SFB 50 (G5082). The Type 3 structure as excavated, looking south-west (scale 1m).



Plate 301. Site 15. Ditch terminal of Enclosure 69 (G5080), looking south (scales 1m).



Plate 302. SFB 58 (G5100) oven (G5170) prior to excavation, looking north-east (scale 1m). The stoke entrance for the oven is clearly visible bottom left.



Plate 303. SFB 58 (G5100) excavated, looking north-north-west (scales 1m).The ditch of Enclosure 48 (G5069) to the rear.



Plate 304. SFB 58 (G5100) excavated, looking south-south-east (scale 1m).
The ditch of Enclosure 48 (G5069) to the foreground.



Plate 305. SFB 58 (G5100) excavated, looking north-west (scales 1m).



Plate 306. SFB 58 (G5100). Detail of oven (G5171).



Plate 307. SFB 58 (G5100) fully excavated (with oven removed), looking north-north-west (scale 1 m). The ditch of Enclosure 48 (G5069) to the rear.



Plate 308. Site 16. Excavation of features at the northern end of Site 16, looking south-west. Possible SFBs 56, 57 & 63 in the foreground.



Plate 309. Site 17. Aerial view after the topsoil strip showing most features including a water main trench, looking north-west.



Plate 310. Structure 55. Underground cellar (G6048) under excavation, looking north.



Plate 311. Structure 55: Underground cellar G6048. Main access chamber (S6204) excavated showing arch of eastern chamber (S6221), looking south-east, scales 1m, 0.5m. Note earlier (prehistoric) ditch.



Plate 312. Structure 55: Underground cellar G6048. Main access chamber (S6204) excavated, looking south-west (scales 1m, 0.5m).



Plate 313. Structure 55. Underground cellar G6048. Main access chamber (S6204) excavated showing arch of western chamber (S6236), looking north-east (scales 1m & 0.5m).



Plate 314. Structure 55. Underground cellar (G6048). Detail of eastern chamber (S6221), looking south-east (scale 1m). Note blocking wall on floor at entrance



Plate 315. Structure 55. Underground cellar G6048. Detail of western chamber (S6236) showing half-excavated fill, looking north (scale 0.5m). Note blocking wall on floor at entrance.



Plate 316. Structure 55. Underground cellar (G6048) fully excavated, looking north-east (scales 1m & 2m).



Plate 317. SFB 64/67. Main feature (G6060) fully excavated, looking south-east (scales 1m & 2m). Note prehistoric ditch in foreground.



Plate 318. SFB 64/67. Main feature (G6060) & fully excavated 'cellar' (G6054), looking south-east (scales 1m & 2m). Note prehistoric ditch in foreground.



Plate 319. SFB 64/67. Main feature (G6060) & fully excavated 'cellar' (G6054), looking north (scales 1m & 2m).



Plate 320. SFB 64/67. Detail of mortar set into north edge, looking south-east (scale 0.5m).



Plate 321. SFB 68 (G6063) under excavation, looking west (scales 2m). The ditch of Enclosure 58 (G6069) is to the rear.



Plate 322. SFB 68 (G6063) fully excavated, looking south-east (scales 2m). A later ditch of Enclosure 58 (G6069) is to the right.



Plate 323. Site 18. SFB 69 (G6067) excavated view looking south (scale 2m).



Plate 324. Site 19. SFB 62 (G5142) on Plateau 5, looking south (scales 1m). Note linear depression (S15551) on east (left) side.



Plate 325. Site 19 - Pit G5143 containing sheep burial (scales 1m & 0.2m).



Plate 326. SFB 65 (G6103, G6055, G6104) - overview with plant & greenhouse, looking north.



Plate 327. SFB 65 (G6103, G6055 & G6104). Excavated view showing hearth (G6104) & platform (G6055), looking north-east (scales 1m & 2m). Quarry edge (G6056) is visible across bottom of picture.



Plate 328. SFB 65 (G6103, G6055 & G6104). Detail of hearth (G6104), looking south-east (scale 1m).



Plate 329. SFB 65 (G6103, G6055 & G6104). Overview fully excavated, looking north-east (scales 2m). Vertical 0.5m scale is on edge of quarry (G6065).



Plate 330. Site 21. View of hollow way (Trackway 32 G7028) with edge of Barrow 2 ditch under, looking south-west (scale 2m).



Plate 331. Site 21. View of hollow ways (Trackways 31 & 32 G7028) with Barrow 2 ditch under, looking north-east (scale 1m).



Plate 332. SFB 74 (G7031) excavated, looking south-west (scales 1m & 2m).



Plate 333. SFB 81 (GP46) excavated showing oven SP158, looking north-east (scale 1m).



Plate 334. SFB 81 (GP46). Detail of oven SP158 under excavation showing stoke-hole & beam slot SP146, looking south-west.



Plate 335. SFB 83. Horse burial, looking north-west (scale 1m).



Plate 336. SFB 80 (G6077) fully excavated, looking north-east (scales 1m). Entrance to front.



Plate 337. SFB 80 (G6077) fully excavated, looking south-west (scales 1m). Entrance to front.



Plate 338. Structure 59. The brick Seamark (G6081) under excavation, looking north-east towards the Thames Estuary.



Plate 339. Structure 59. The brick Seamark (G6081) with windmill (Structure 58) cross-testle foundation (G6079) to rear, looking south (scales 1m).



Plate 340. Structure 59. The brick Seamark (G6081) on left with windmill (Structure 58) cross-testle foundation (G6079) to right, looking east (scales 1m).



Plate 341. Structure 59. The brick Seamark (G6081). One of the Seamark scaffold post-holes (S16141) showing post ghost, looking east (scale 0.5m).



Plate 342. Coin of James 1 from windmill foundation (G6079).



Plate 343. Second World War Structure 61 (G4096), looking south-west.



Plate 344. Second World War Structure 61 (G4096). Detail of Room 1 & access steps, looking south (scales 1m & 2m).



Plate 345. Second World War Structure 61 (G4096). Detail of Room 2, looking east, showing scars on concrete floor.



Plate 346. A nearly complete lump of smithing hearth base.

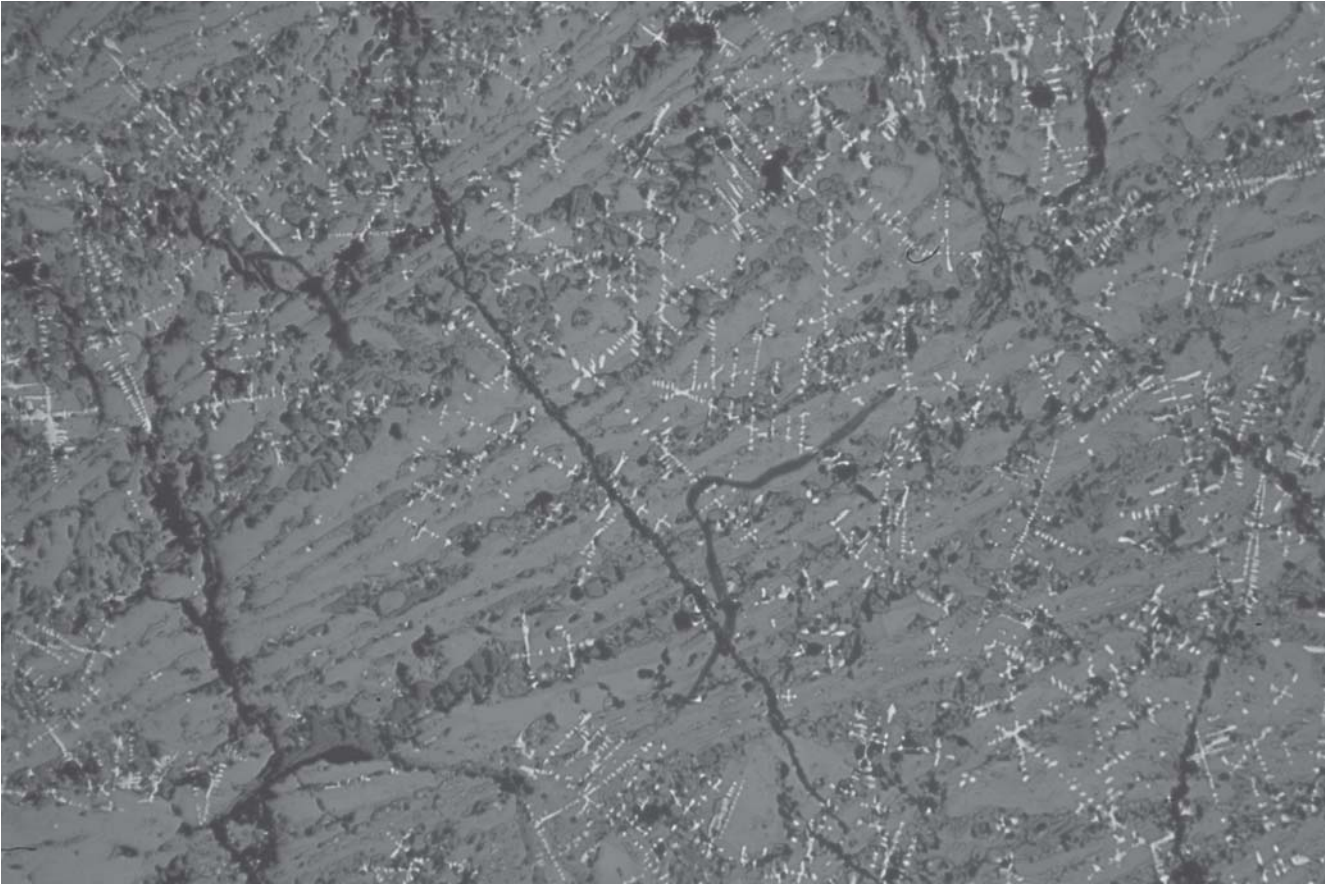


Plate 347. Micro-structure of a section cut from part of the same plano-convex lump shown in Plate 346.



Plate 348. A smaller, more irregularly shaped piece of apparent smithing hearth waste.

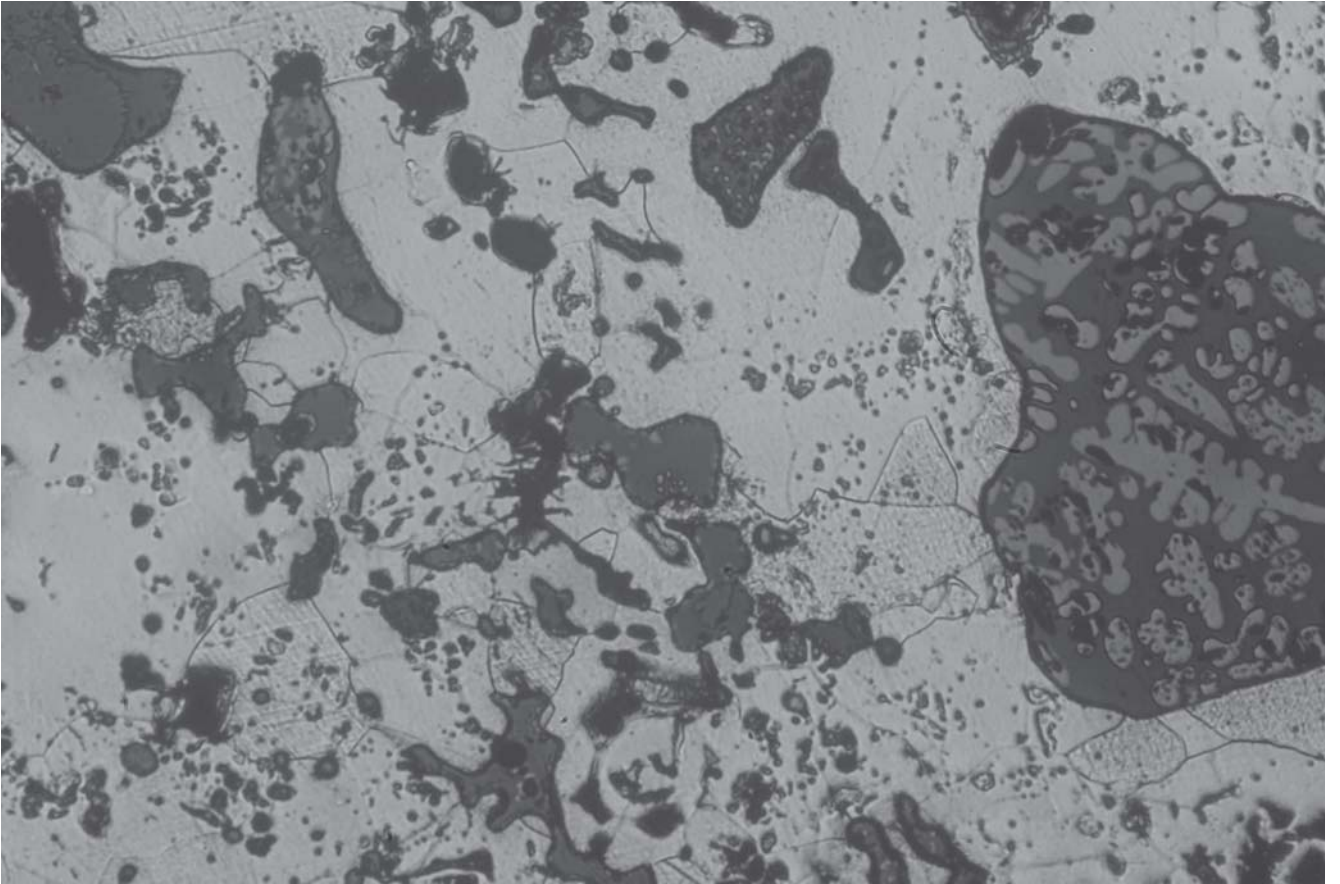


Plate 349. Photomicrographic of part of a section from the apparent smithing hearth waste shown in Plate 348.

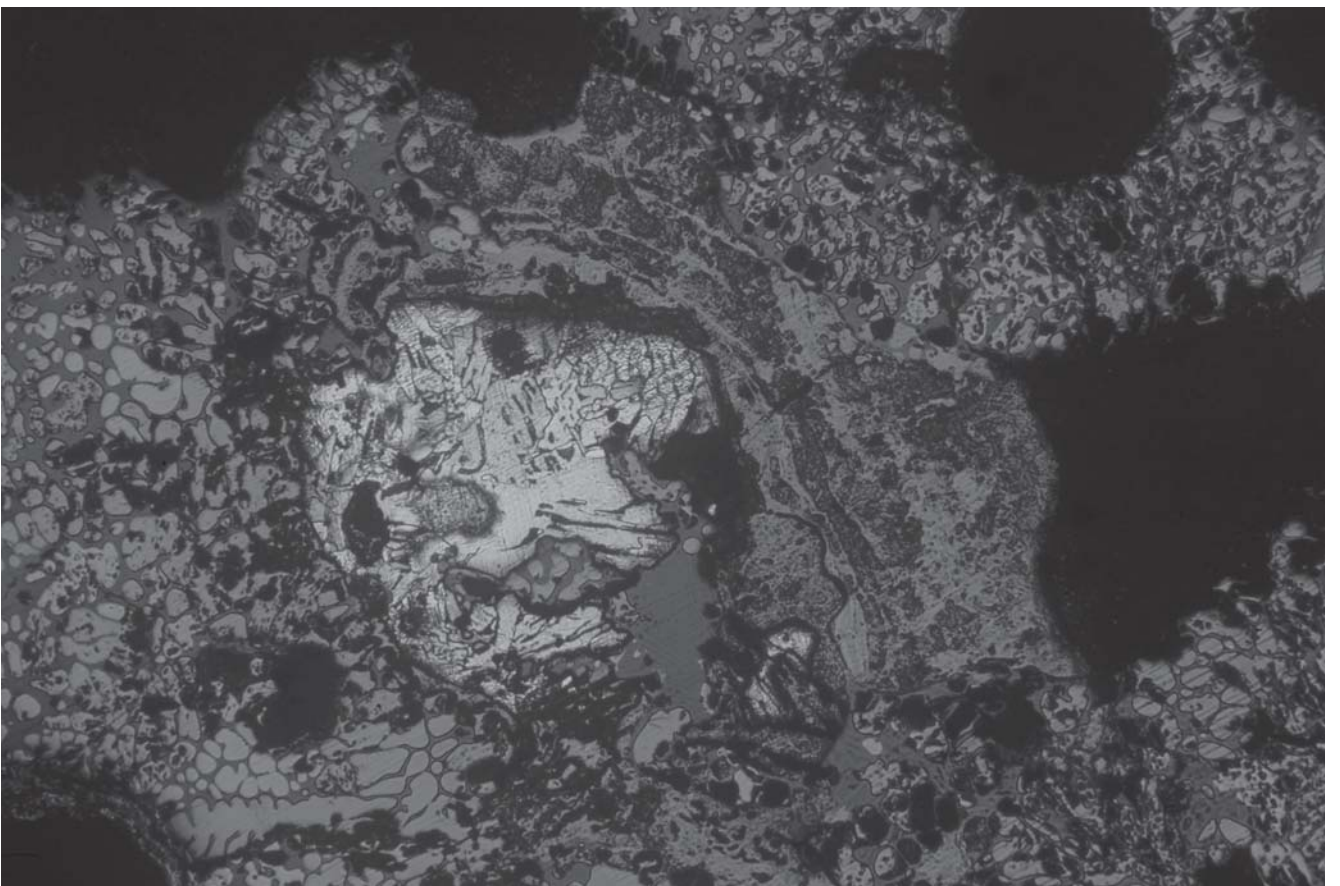


Plate 350. Part of the same lump of smithing hearth waste (Plate 348) showing an 'island' of low carbon bloom iron.



Plate 351. Another irregularly shaped piece of apparent smithing hearth waste

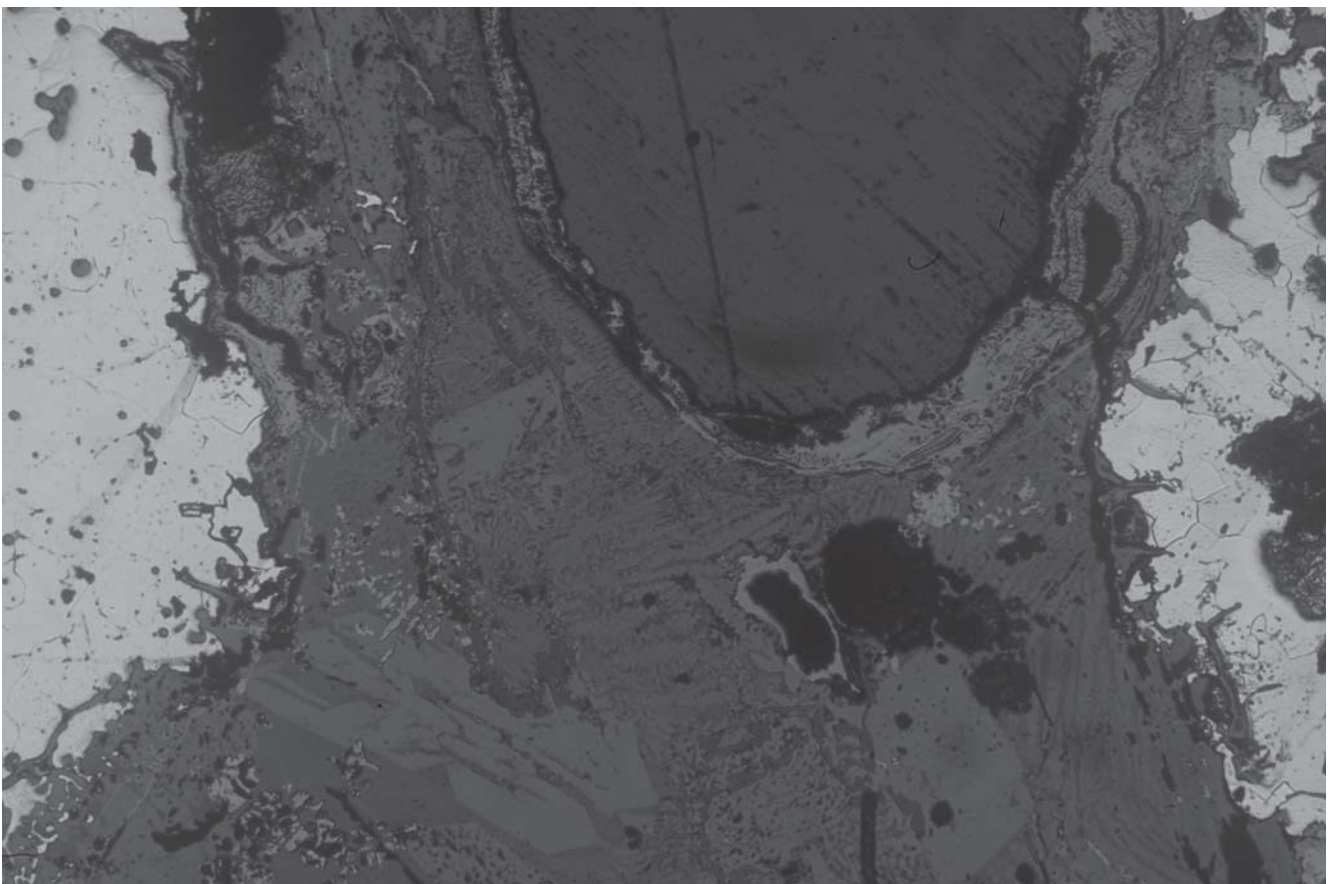


Plate 352. Photomicrograph of part of a section through the waste lump shown in Plate 351.



Plate 353. Holdfast, found with many fragments of iron-smithing waste (as in Plates 348 & 351).



Plate 354. Small stud-like piece of iron.



Plate 355. Photomicrograph of the stud-like piece of iron shown in Plate 354.



Plate 356. Very lightweight, generally pale grey, porous, non-magnetic slaggy material.



Plate 357. Close up view of one of the same pieces of lightweight slaggy material (shown in Plate 346).



Plate 358. Same lightweight slag-like pieces minus adhering sandy loam.

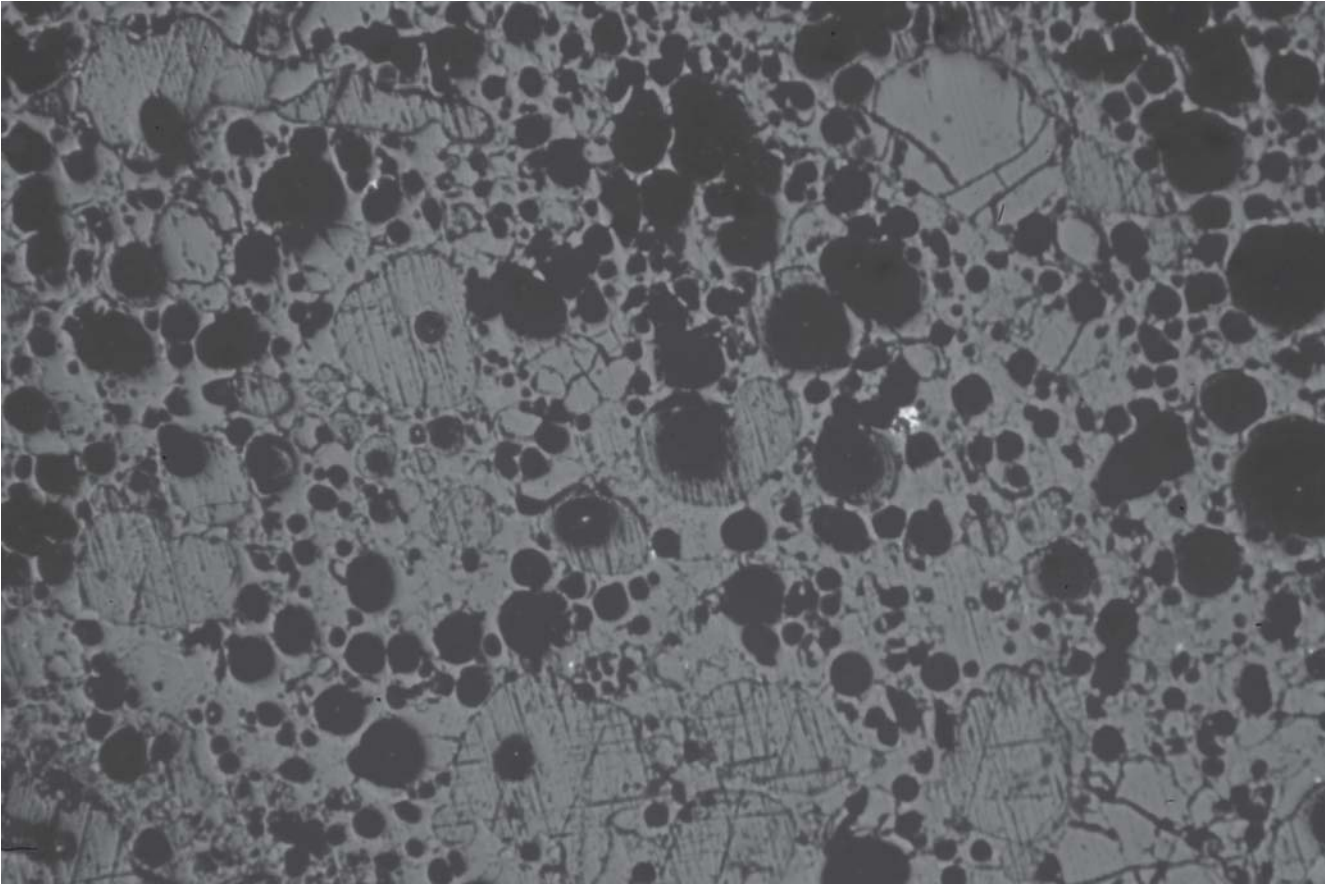


Plate 359. Photomicrograph of a section through one of these pieces of lightweight, pale 'Iron Age grey' fragments of slag-like material.



Plate 360. Fragment of part vitrified lightweight material interpreted here as heavily burnt daub (see Plate 358).

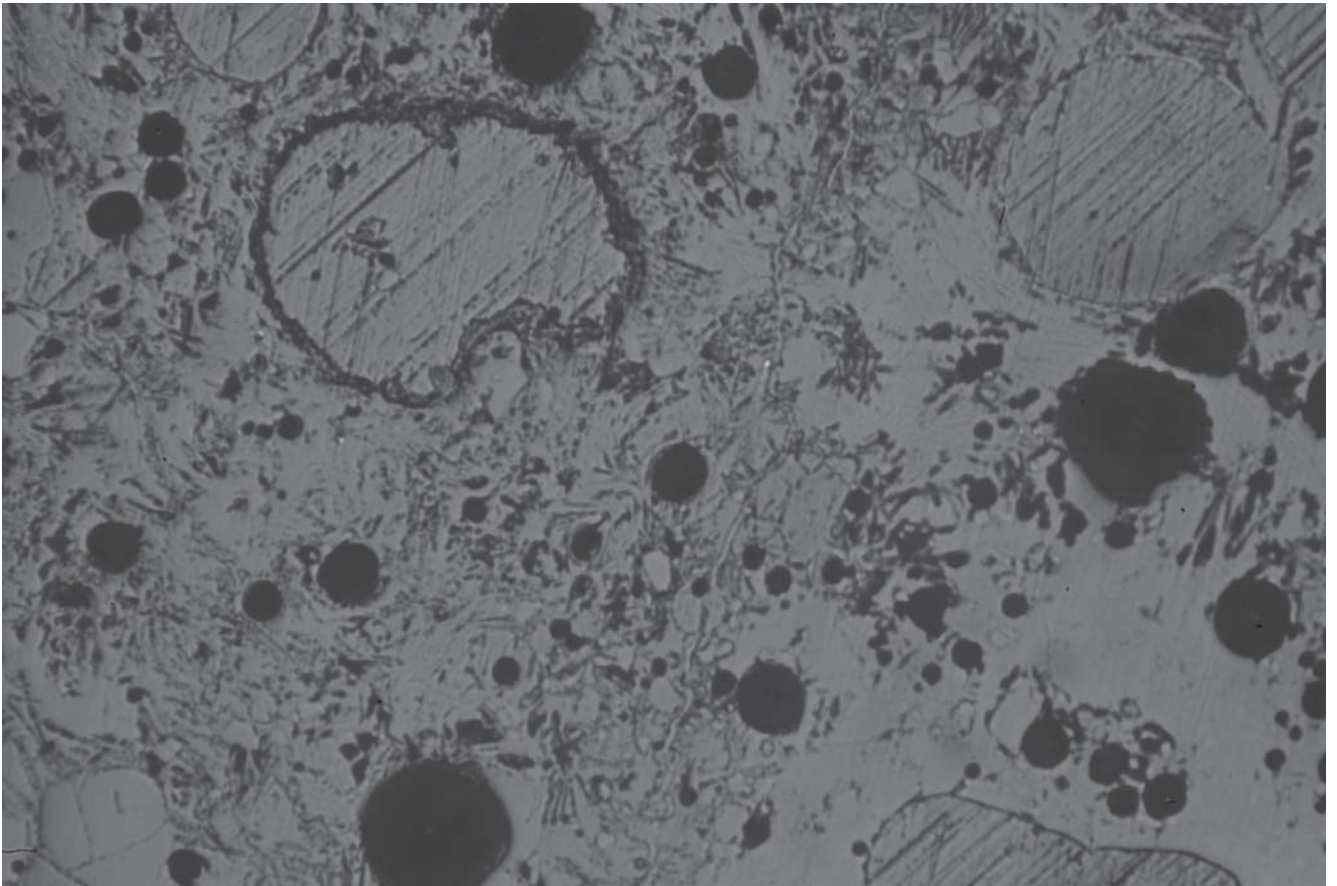


Plate 361. Photomicrograph of a section through the fragment of lightweight, heavily burnt/part-vitrified suspected daub.



Plate 362. Three free-threshing wheat (s.l.) grains (*Triticum durum/turgidum/aestivum* s.l.) from pit 10454, Plateau 1; ventral, dorsal & side views. (Photographed by James Turner, National Museum of Wales)

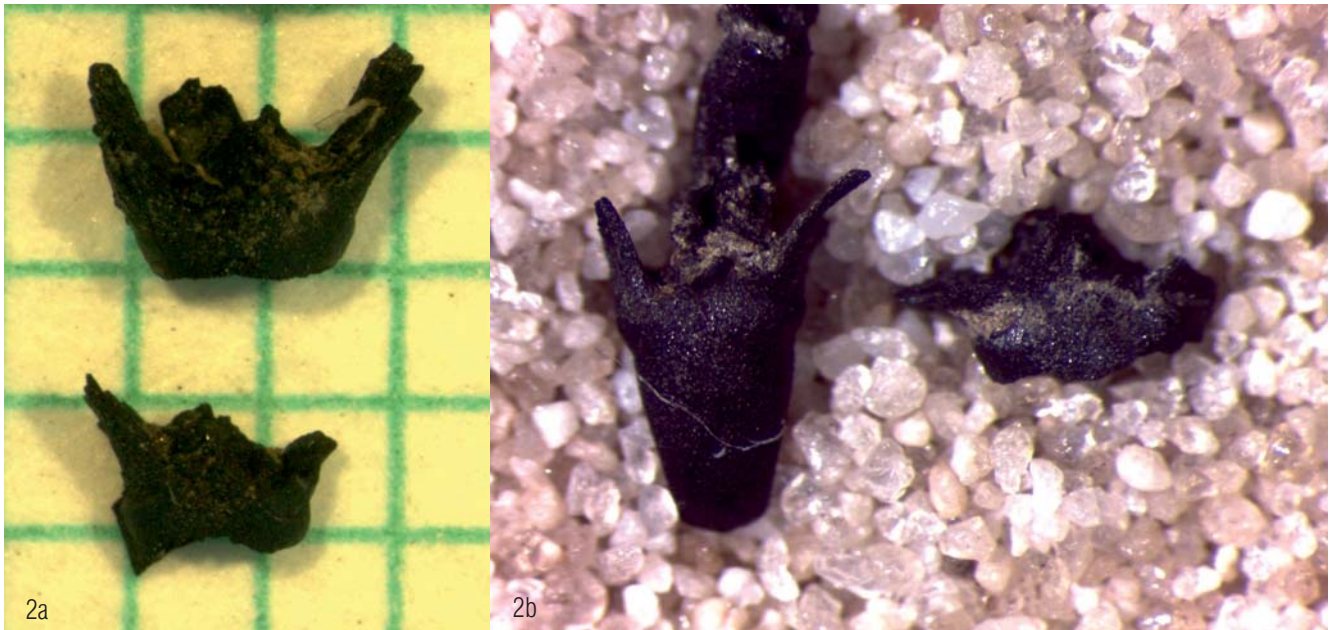


Plate 363. Free-threshing tetraploid wheat rachis fragments from pit 10454, Plateau 1 (*Triticum durum/turgidum*); 2a. Thanet Earth pit 10454; (Photographed by Ruth Pelling, Historic England) 2b. comparing rachis fragments from Greifensee, Switzerland (left) to rachis from Thanet Earth pit 10454, Plateau 1 (right) (Photographed by Stefanie Jacomet, University of Basel)

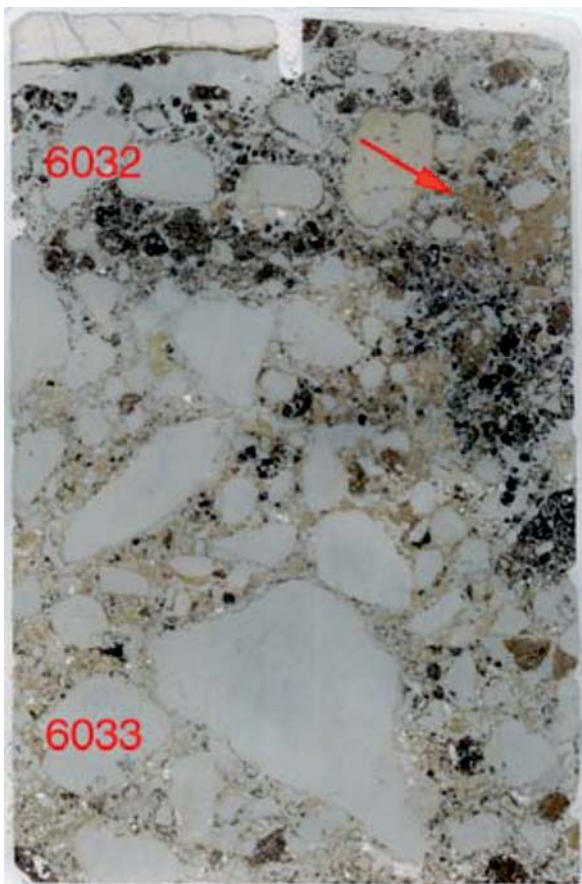


Plate 364. Scan of M434, with chalk & humic soil layered Context 6032 overlying chalky layer Context 6033. Note chalk soil contains greyish yellow calcareous silt subsoil material; arrow indicates anomalous presence of organic fragments, etc. Frame width is ~50mm.

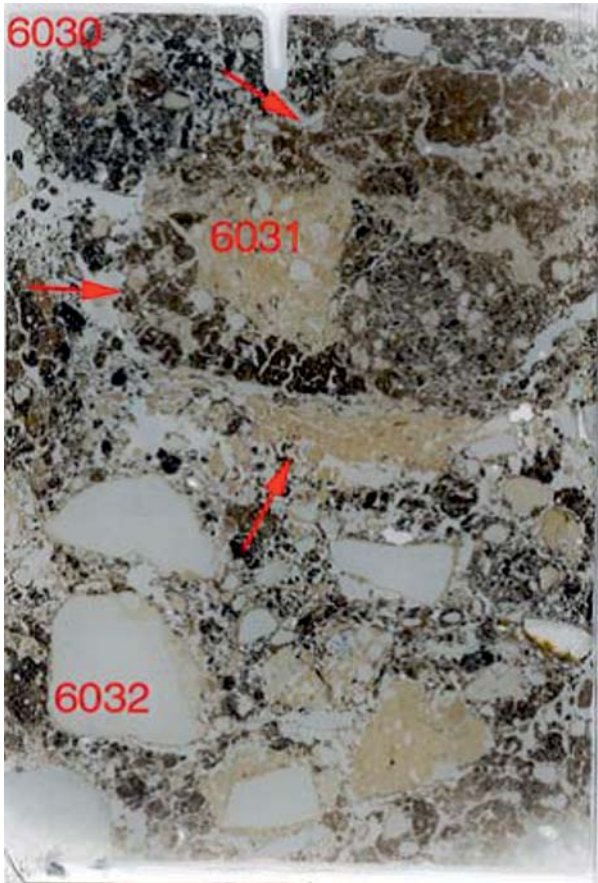


Plate 365. Scan of M434, with layered 'humic' 6030, compact & cemented mixed topsoil & subsoil material in Context 6031 (arrows), & mixed humic & subsoil Context 6032. Frame width is ~50mm.

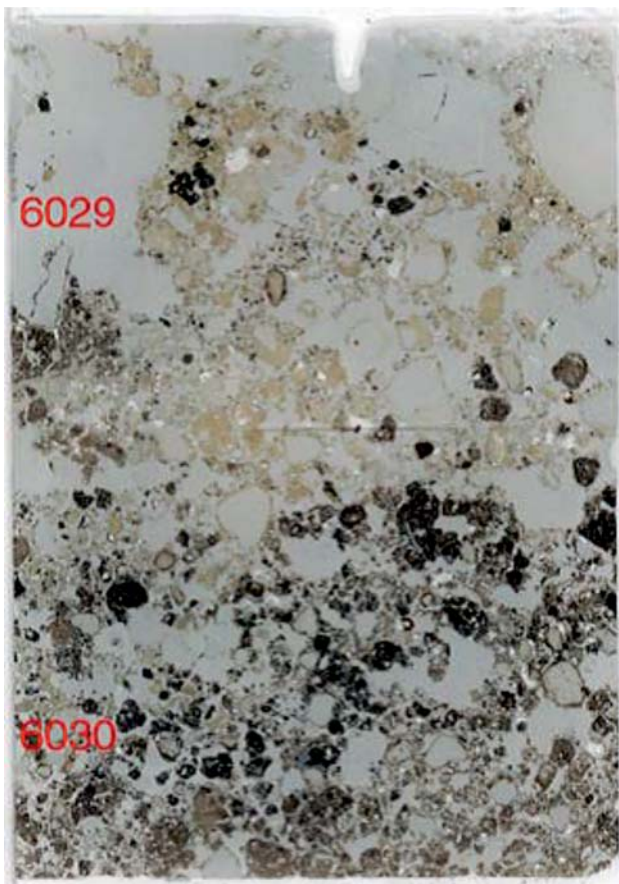


Plate 366. Scan of M432, showing layers of loose humic crumbs (Context 6030) overlain by crumby & fine subangular structures of chalky subsoil. Frame width is ~50mm.

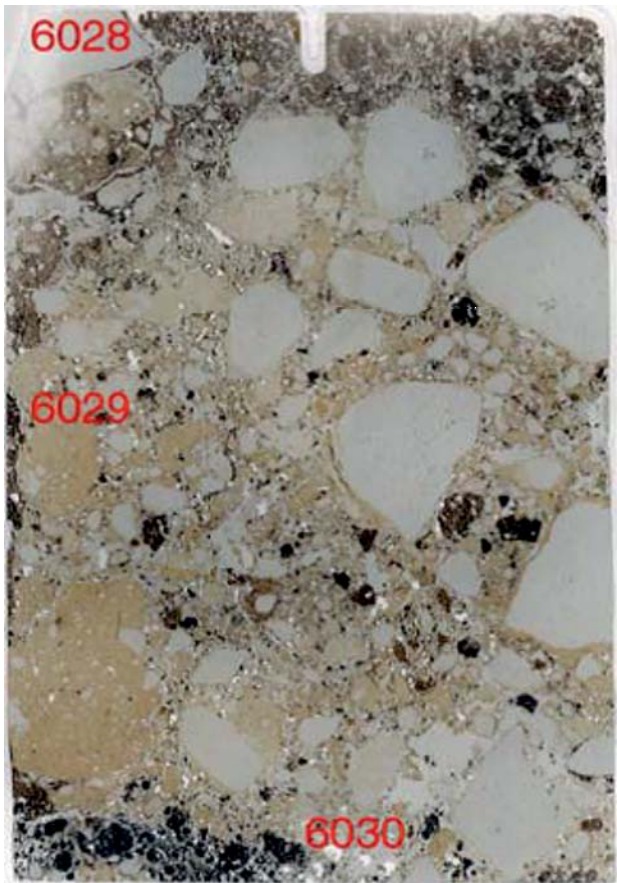


Plate 367. Scan of M431, which is mainly composed of chalky subsoil & chalk clasts, between two humic soil layers (Contexts 6028 & 6030). Frame width is ~50mm

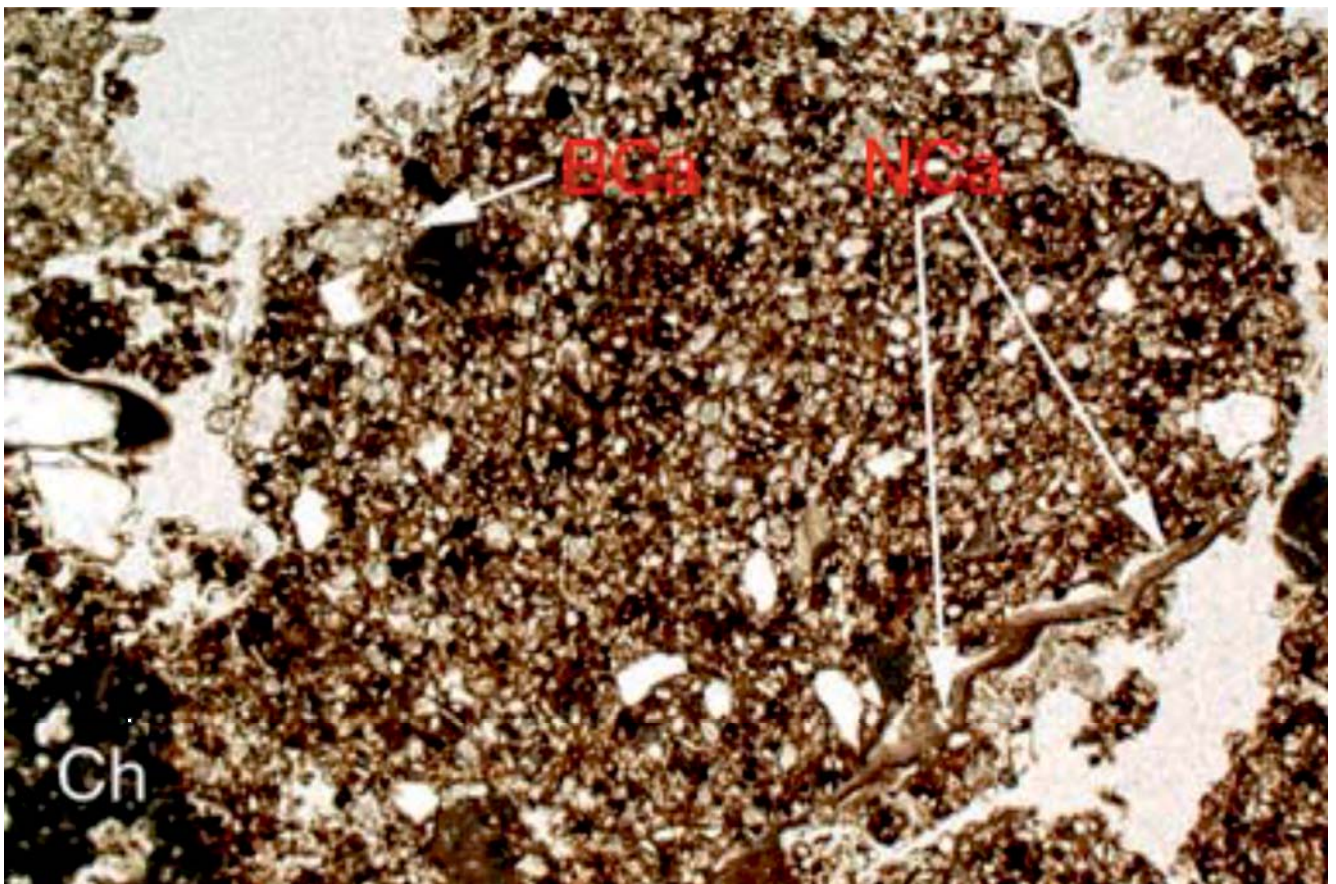


Plate 368. Photomicrograph of M434 (Context 6032); humic soil (Ah1 horizon, turf); soil characterised by chalk (Ch), biogenic calcite (BCa) & post-depositional formation of needle calcite (NCa). Plane polarised light (PPL), frame width is ~4.62mm.

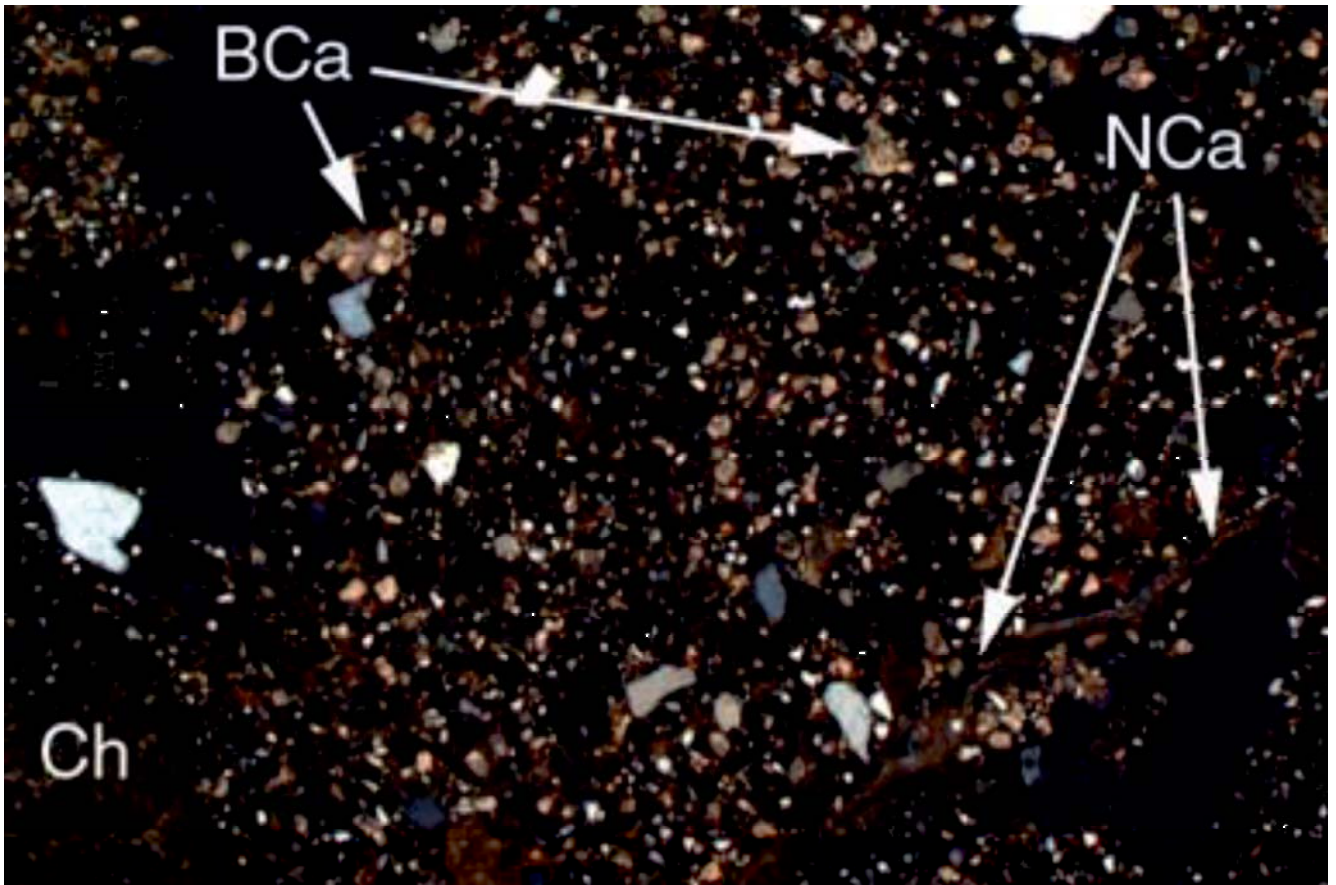


Plate 369. As Plate 368, under crossed polarised light (XPL).

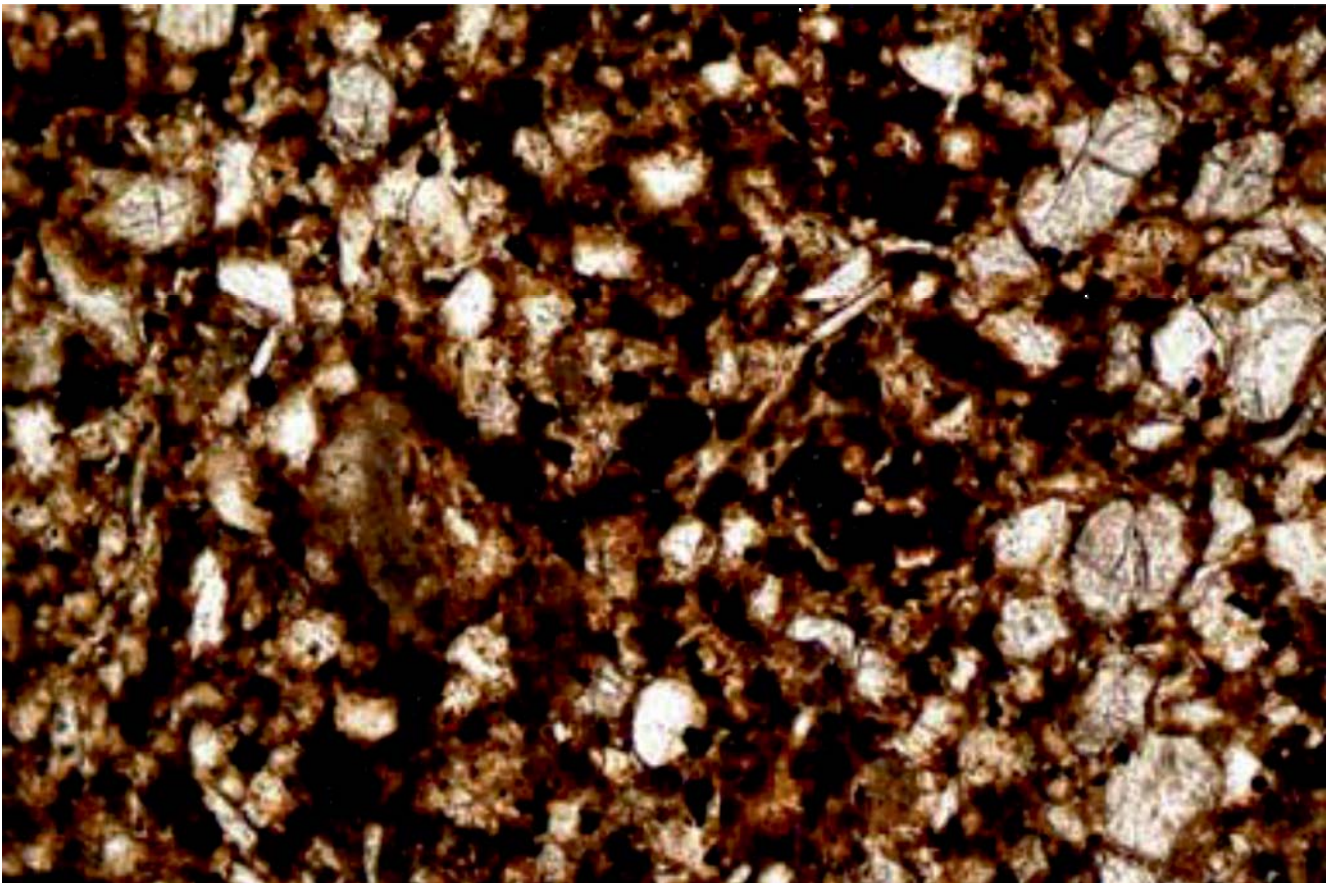


Plate 370. Detail of Plate 368, showing humic content of turf soil. PPL, frame width is ~ 0.90 mm.

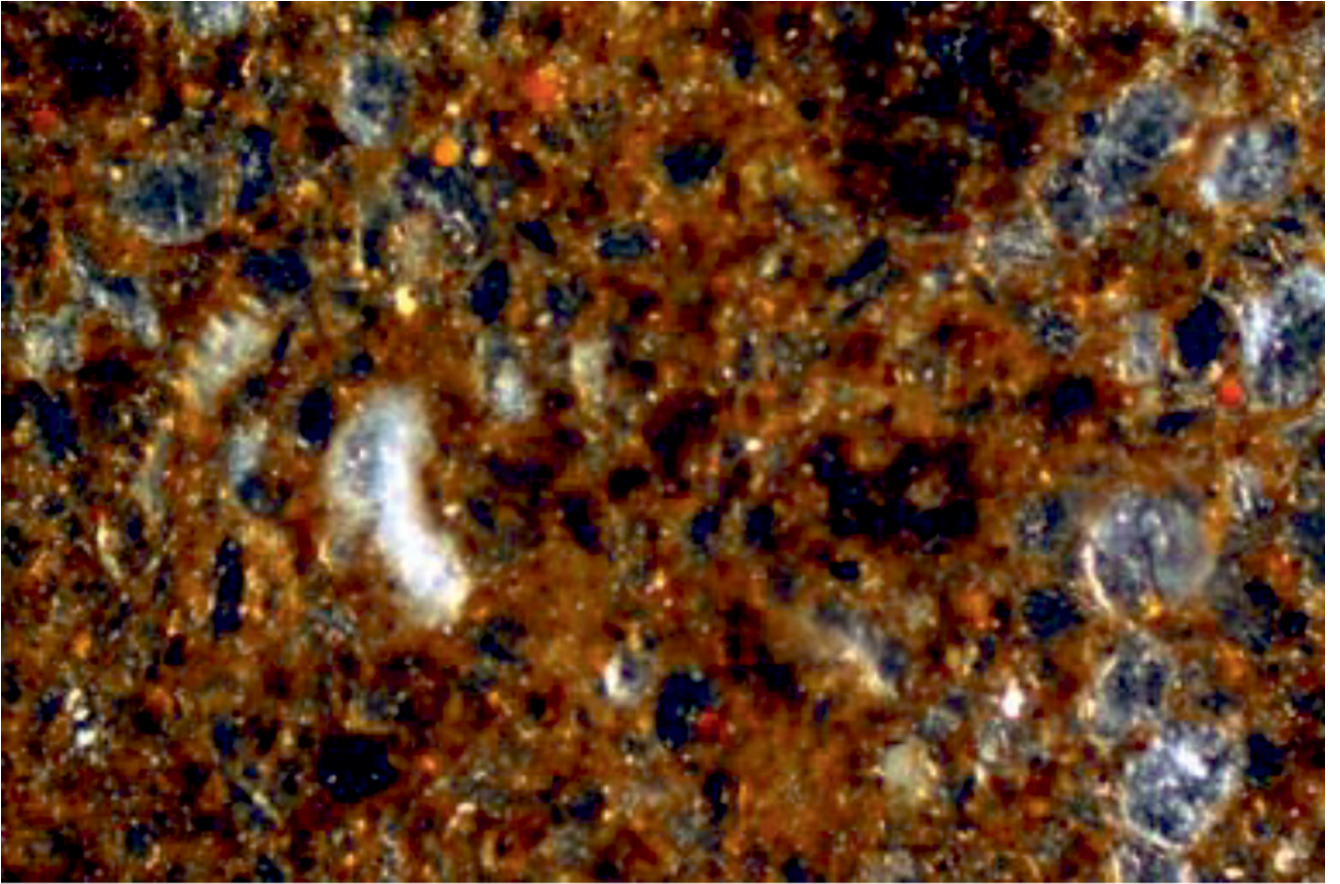


Plate 371. As Plate 370, under oblique incident light (OIL).

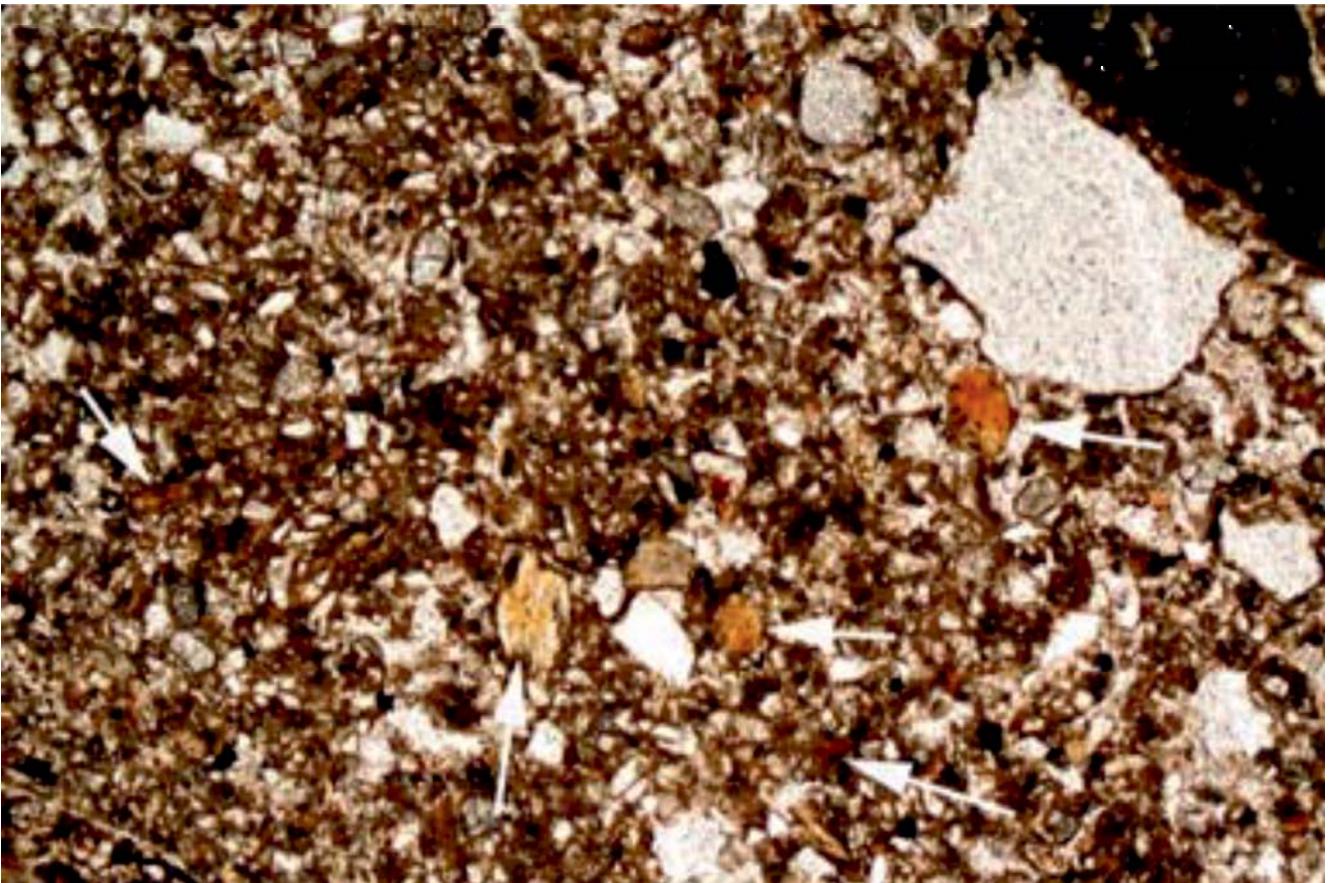


Plate 372. Photomicrograph of M434 (Context 6032); calcareous silt containing anomalous amounts of humifying & humified plant material (arrows). PPL, frame width is ~ 2.38 mm.

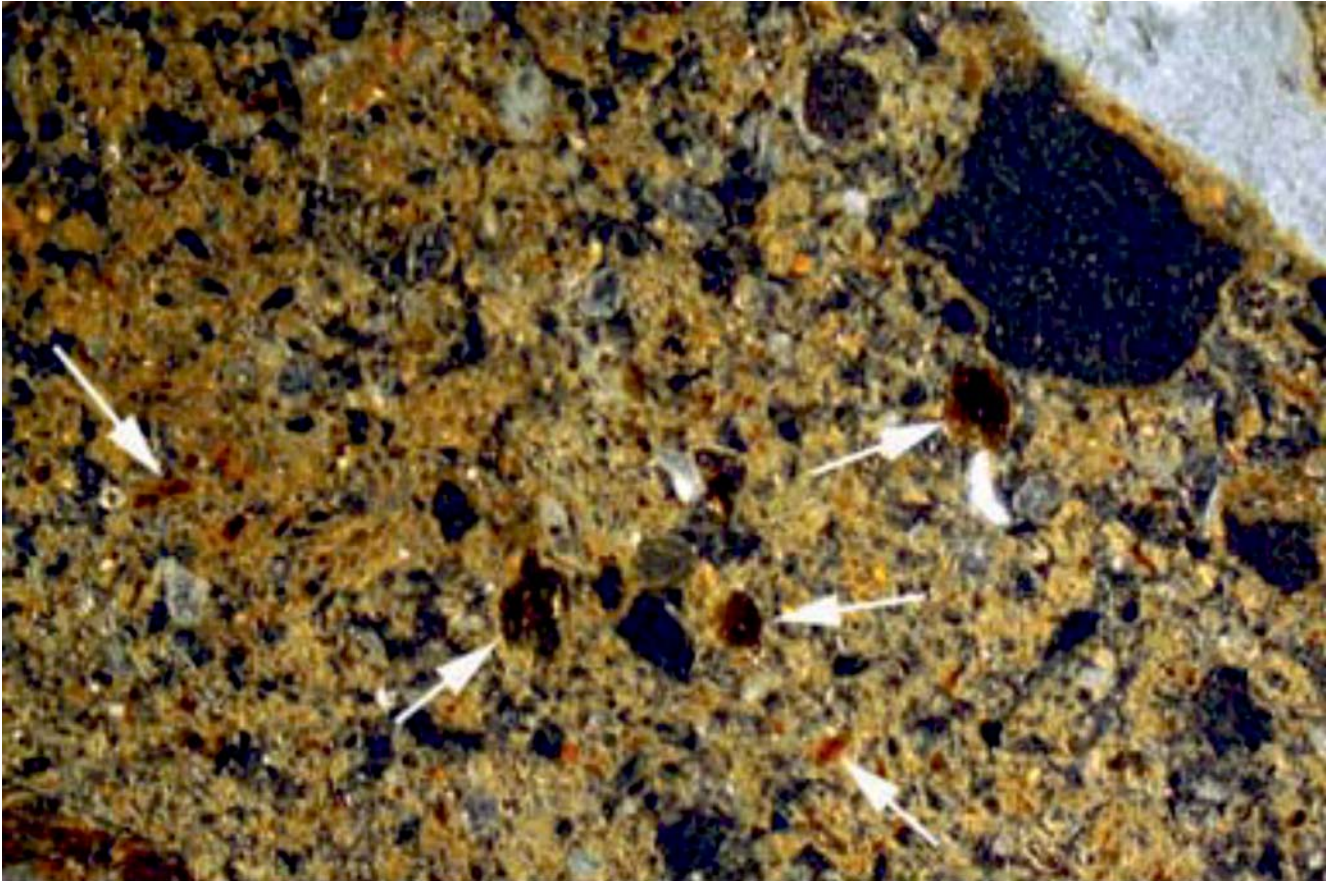


Plate 373. As Plate 372, under OIL.

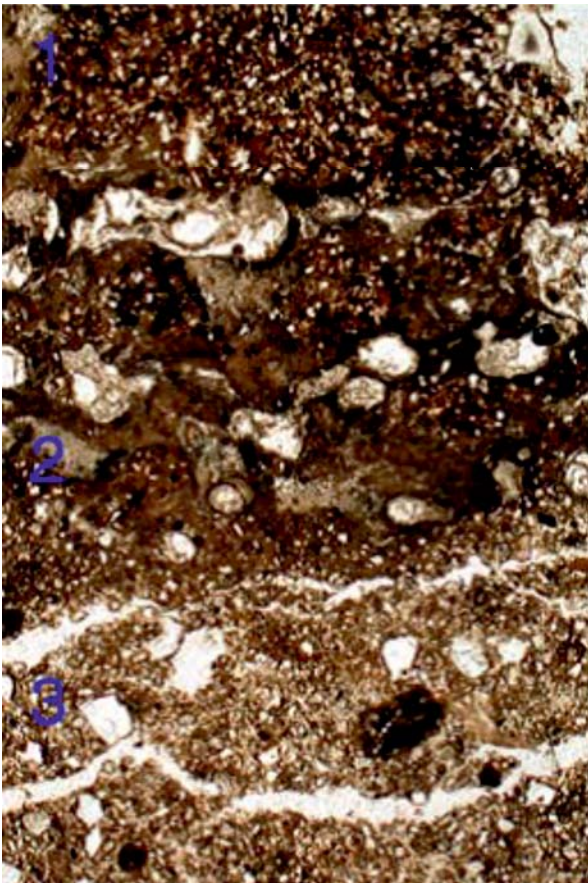


Plate 374. Photomicrograph of M433 (Context 6031); note three cemented layers, 3: calcareous silt (loessic drift origin), 2: chalky subsoil, 1: humic turf soil. PPL, frame height is ~4.62mm.

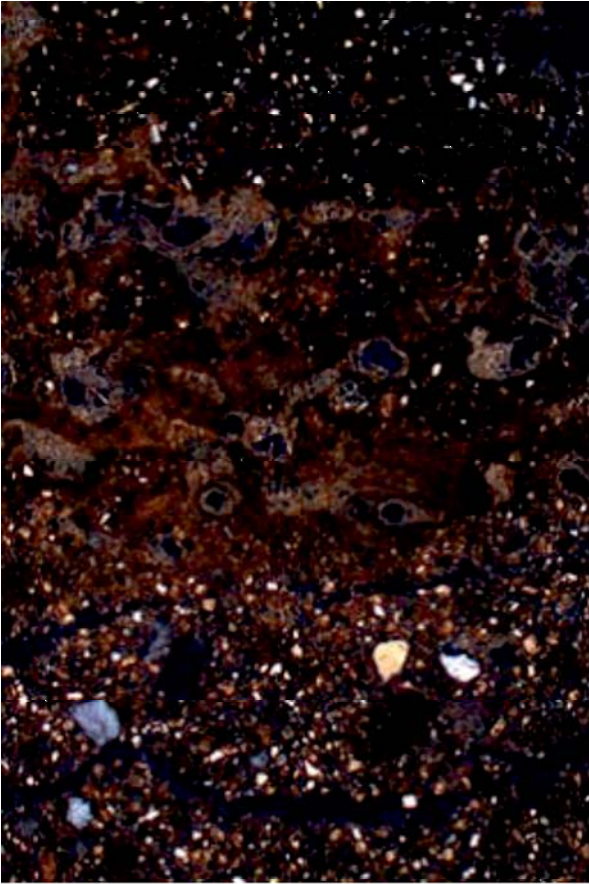


Plate 375. As Plate 374, under XPL. Note needle calcite within relict root channels (Layer 2) and decalcified humic turf soil.



Plate 376. As Plate 374, under OIL. Note inclusion of turf fragments in top of Layer 2.

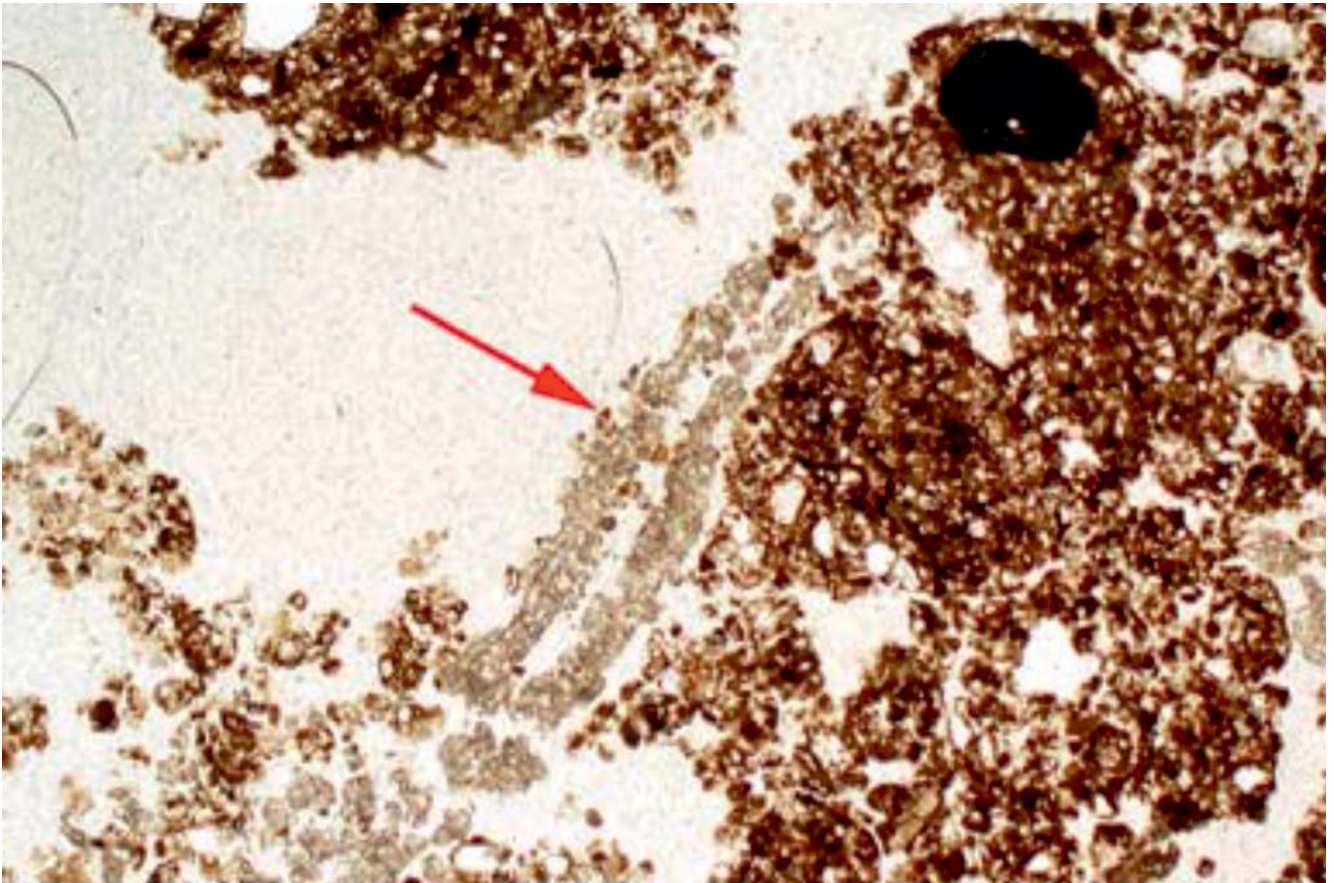


Plate 377. Photomicrograph of M432 (Context 6030); humic soil fragments (crumbs and fine subangular blocky); note biogenic calcite pseudomorphs of root (?) trace (arrow). PPL, frame width is ~ 4.62 mm.

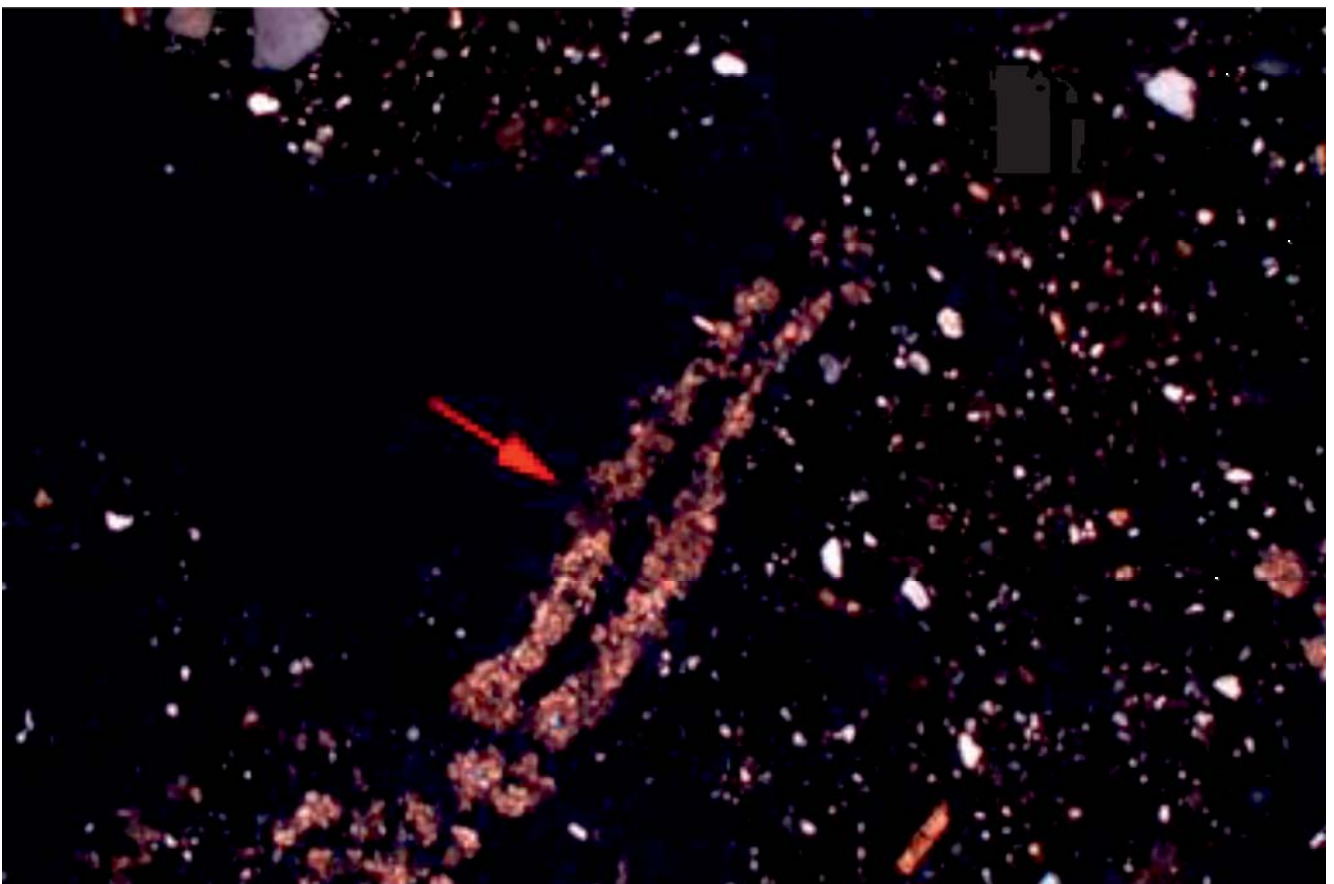


Plate 378. As Plate 377, under XPL.

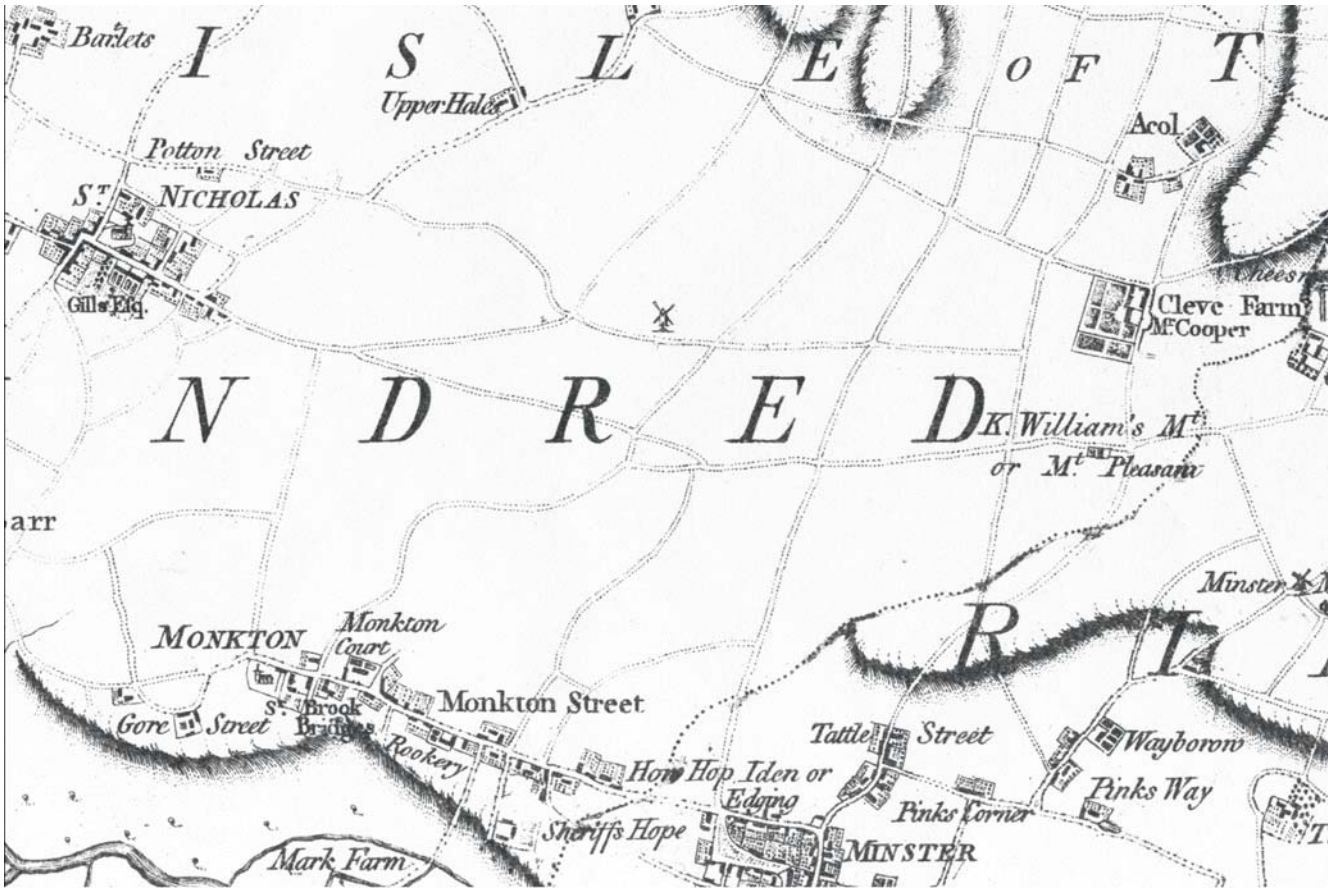


Plate 379. Detail of Andrews, Dury, and Herbert's map of 1769.

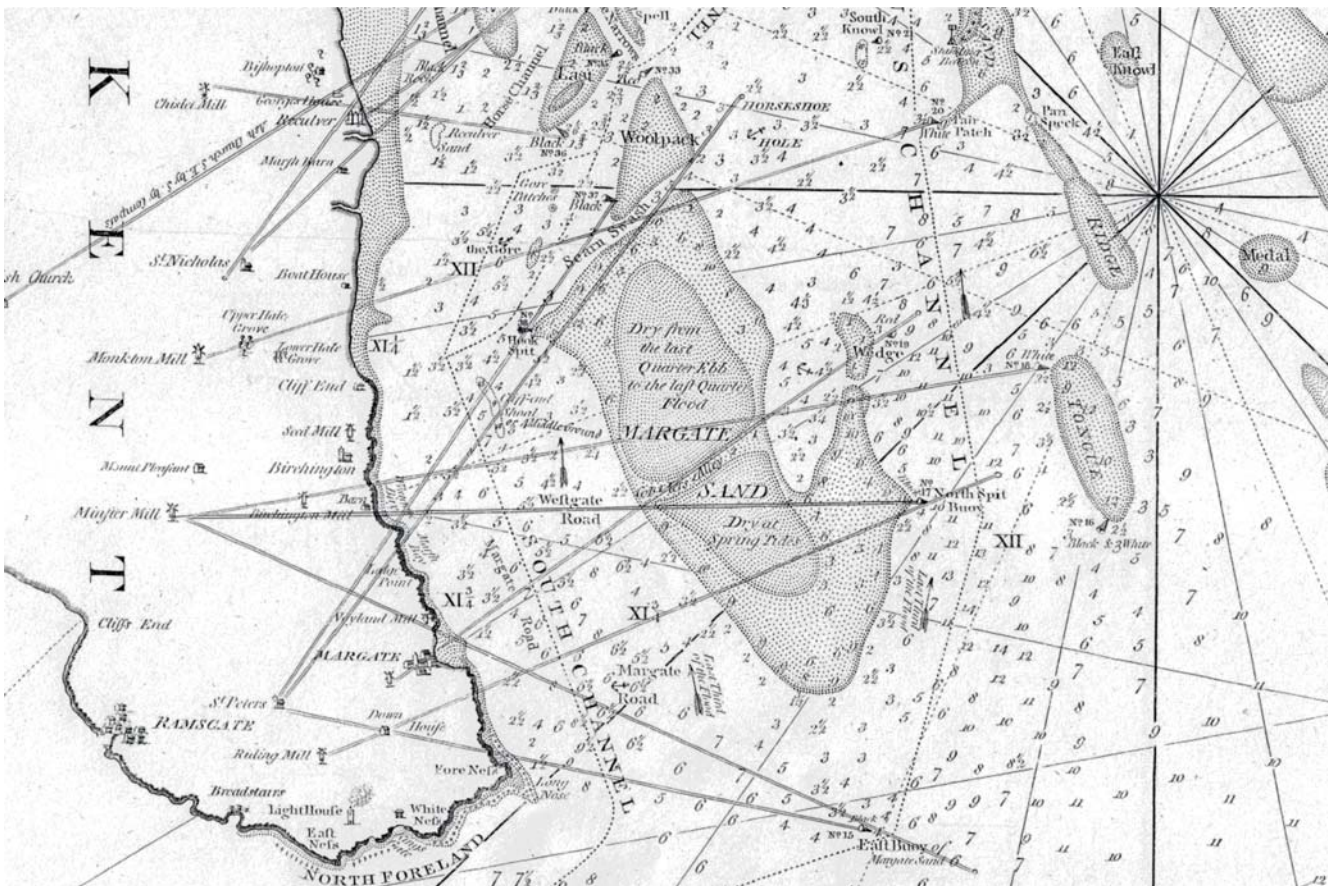


Plate 380. Detail of a navigational chart at SCTL, dated 1786. Note the chart is incorrect in still showing the beacon at Monkton as a Mill, several years after its removal.

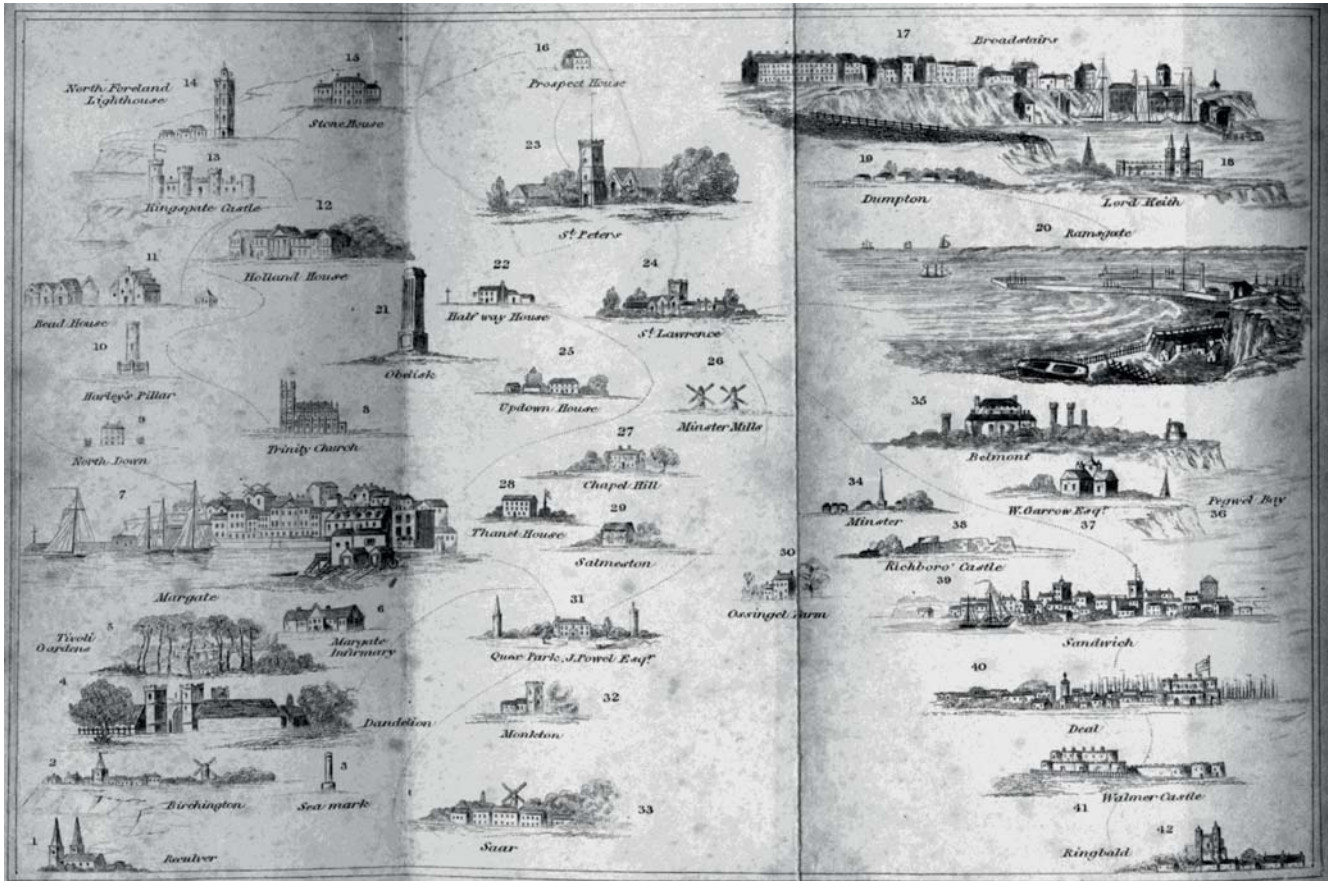


Plate 381. Fold-out engraving of illustrations of sights awaiting holidaymakers travelling down the Thames Estuary, from GA Cooke's Topographical and Statistical Description of the County of Kent (New Edition), 1840 (SCTL)



Plate 382. Detail of the Monkton Sea-mark from GA Cooke's Topographical and Statistical Description of the County of Kent (New Edition), 1840 (SCTL).

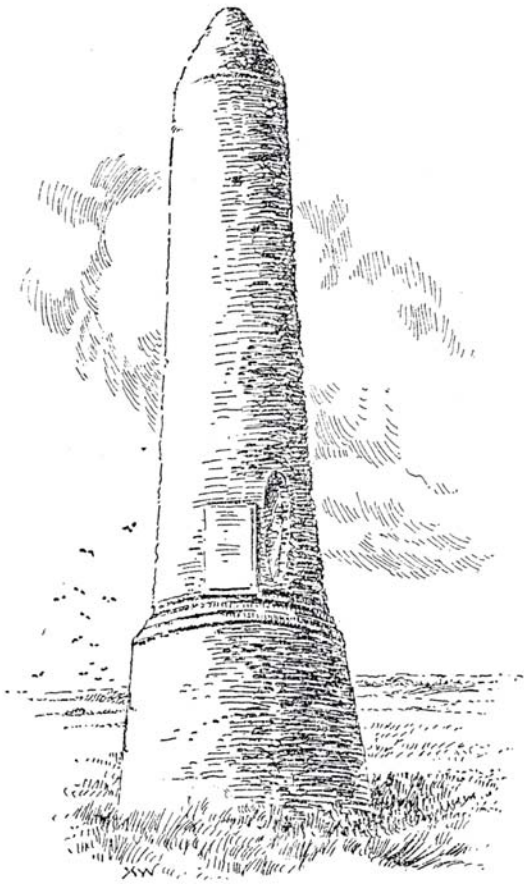


Plate 383. View of the Monkton Beacon from Igglesden (1932, 77).



Plate 384. Photograph of the beacon, possibly on the eve of its demolition in 1922.

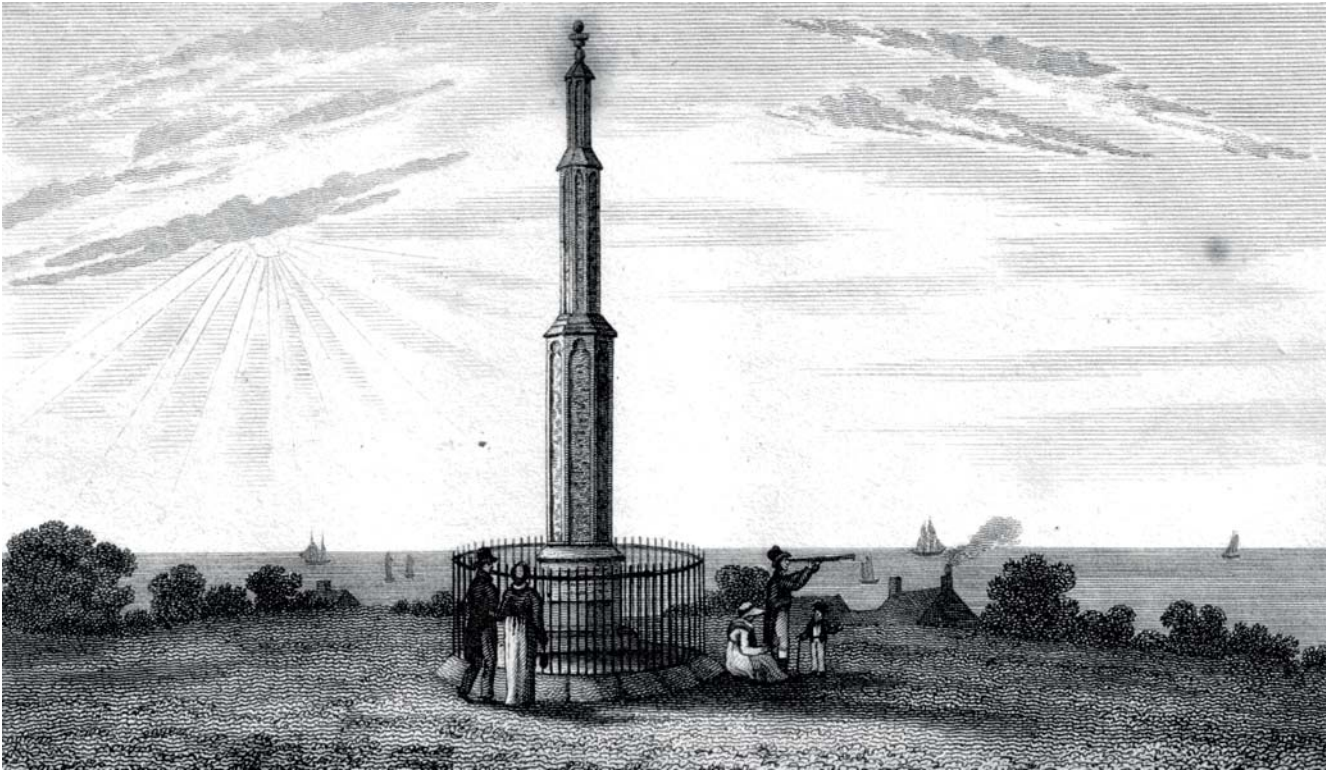


Plate 385. The North Down Beacon, soon after its reconstruction in 1818; J. Shury after G. Varlo, published May 1820.